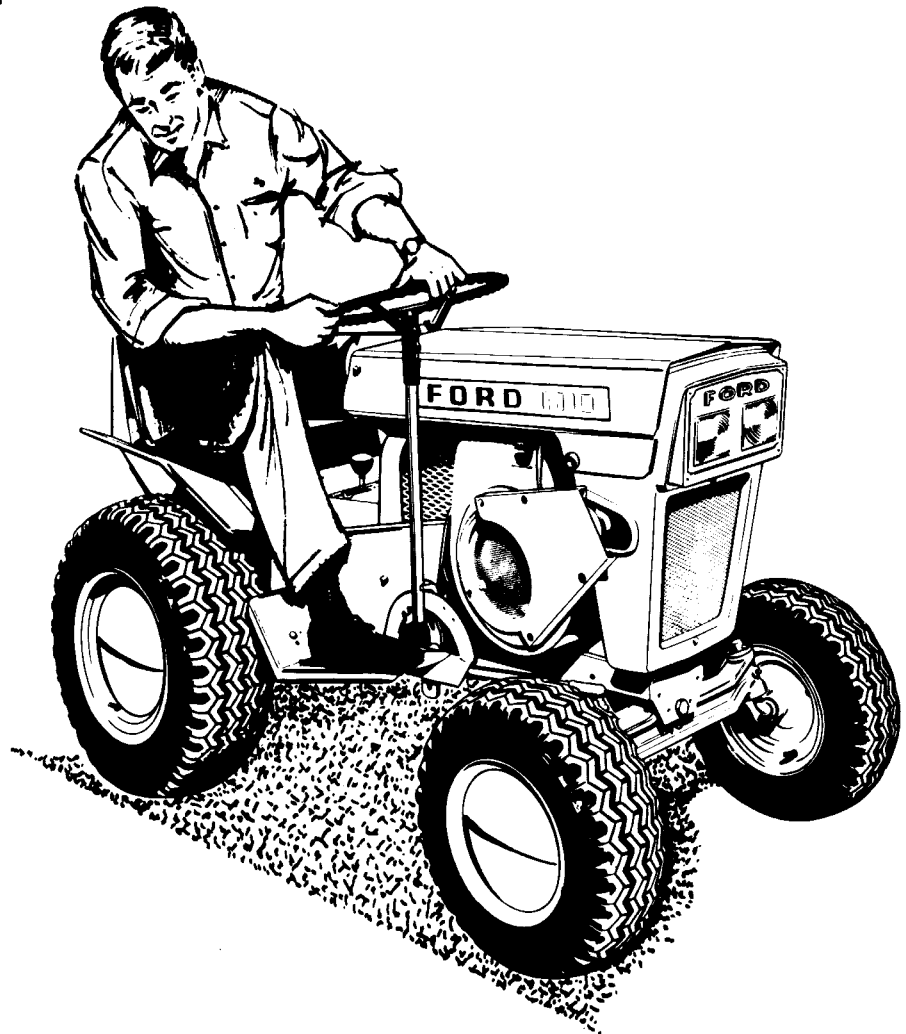


FORD LAWN AND GARDEN TRACTORS

NO. 80 GEAR DRIVE
NO. 100 GEAR DRIVE
NO. 120 GEAR DRIVE

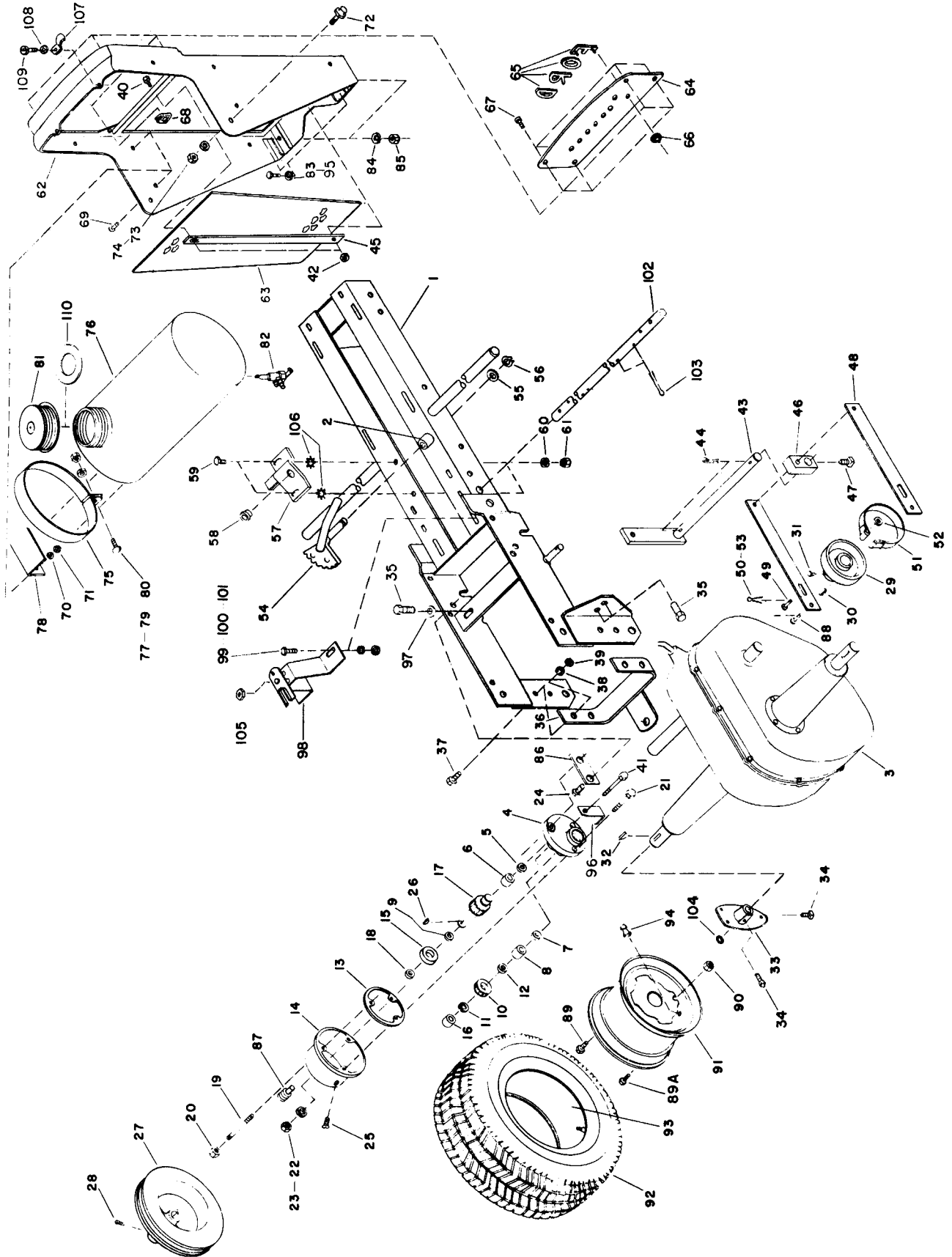
NO. 100 HYDROSTATIC DRIVE
NO. 120 HYDROSTATIC DRIVE

PARTS LIST



FORD TRACTOR DIVISION FORD MOTOR COMPANY
BIRMINGHAM, MICHIGAN

ILLUSTRATION 1.

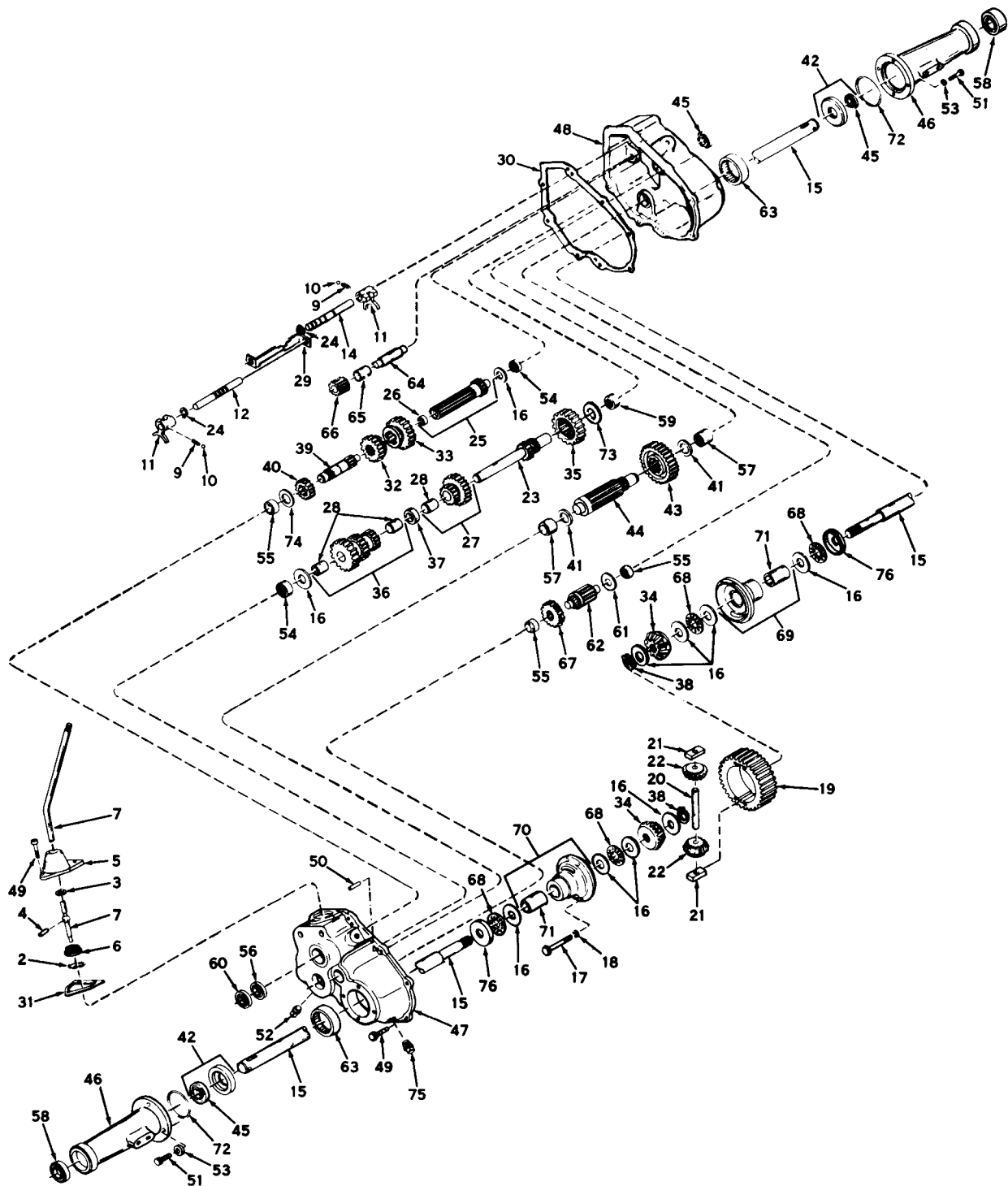


PARTS LIST 80 GEAR DRIVE - ILLUSTRATION 1.
See Page 15 for Parts Used on 100-120 Tractors

Ref. No.	Part No.	Quan.	Description	Ref. No.	Part No.	Quan.	Description	Ref. No.	Part No.	Quan.	Description
1	114025	1	Frame Assembly	39	443110	4	Nut, 3/8-16 Hex - Hitch Mtg.	74	443106	2	Nut, 5/16-18 Hex - Hood Latch Stud Mtg.
2	315393	2	Bushing - Steering Quad. Pivot	40	400112	2	Screw, 1/4-20 x 1 Hex Hd. Cap	75	308601	2	Strap - Fuel Tank Mtg.
3	114024	1	Transmission Assembly (See Page 5)	41	400200	1	Screw, 5/16-18 x 2-1/2 Hex Hd. Cap	76	107250	1	Fuel Tank
4	239017	1	Housing - Inner Input Gear	42	444708	2	Nut, 1/4-20 Hex Gripco C/Lock	77	402232	2	Screw, 1/4-20 x 1-1/4 Rd. Hd. Mach. - Fuel Tank Strap Mtg.
5	342529	1	Thrust Washer	43	154560	1	Brake Shaft & Arm Assembly	78	325802	2	Bracket - Fuel Tank Mtg.
6	342560	1	Needle Bearing	44	460032	2	Pin, 1/8 x 1-1/2 Cotter -	79	446128	2	Lockwasher, 1/4 Med. - Fuel Tank Strap Mtg.
7	331572	1	Oil Seal - Input Shaft	45	341826	1	Brake Shaft Retaining	80	443102	2	Nut, 1/4-20 Hex - Fuel Tank Strap Mtg.
8	308554	1	Needle Bearing	46	342642	1	Bracket - Lower Front Grille Mtg.	81	153482	1	Fuel Tank Cap Assembly
9	342776	1	Thrust Washer	47	412035	1	Arm - Brake Slide	82	108557	1	Shut Off Valve Assembly
10	500393	1	Gear - Reverse w/Shaft - Input (Illus. 2 - Ref. 39)	48	342649	2	Pin, 3/8 x 1-1/4, Clevis - Brake	83	400264	2	Screw, 3/8-16 x 1-1/4 Hex Hd. Cap - Front Cowling to Frame Mtg.
11	458432	1	Snap Ring	49	461487	1	Slide Arm Mtg.	84	446140	2	Lockwasher, 3/8 Med. - Front Cowling to Frame Mtg.
12	342776	1	Thrust Washer	50	460014	2	Pin Retaining	85	443110	2	Nut, 3/8-16 Hex - Front Cowling to Frame Mtg.
13	342558	1	Gasket - Housing Inner	51	153538	1	Brake Band & Lining Assembly	86	342765	1	Spring - Gear Box Mtg.
14	218012	1	Housing - Outer Input Gear	52	453011	1	Washer, 3/8 SAE	87	342766	1	Plug, 1/4-18 Hex Slot - Magnetic Oil Level Plug
15	342563	1	Ball Bearing - Input Gear	53	460014	1	Pin, 3/32 x 3/4 Cotter - Brake Band Mtg.	88	461468	1	Pin, 3/8 Clevis - Brake Band Mtg.
16	342561	1	Needle Bearing - Input Shaft	54	126330	1	Steering Quadrant and Arm Assembly	89	315298	6	Bolt - Rear Wheel Mounting
17	331525	1	Gear - Input	55	326053	1	Washer - Quadrant Retainer	89A	315298	4	Bolt - Extra, Rear Wheel Mtg.
18	331572	1	Oil Seal - Input Gear Shaft	56	458438	1	Ring - National X50-226 Retaining, Quadrant Retainer	90	443116	4	Nut - Extra, Wheel Bolt Mtg.
19	342650	1	Stud - Reversing Gear Box to Frame Mtg.	57	154562	1	Steering Support Brkt. & Bushing Assy.	91		2	Rear Wheel Disc Assy.
20	342764	1	Nut, 5/16-18 Hex SAE Std. High - Reversing Gear Box to Frame Mtg.	58	315315	1	Bushing - Steering Rod	92		2	Tire - Rear Wheel
21	400198	1	Screw, 5/16-18 x 2-1/4 Hex Hd. Cap - Inner to Outer Hsg.	59	400226	2	Screw, 5/16-24 x 1 Hex Hd. Cap - Steering Support Brkt. Mtg.	93		2	Inner Tube - Rear Tire
22	446134	3	Lockwasher, 5/16 Med.	60	446134	2	Lockwasher, 5/16 Med. - Steering Support Brkt. Mtg.	94	303873	2	Tire Valve - Tubeless
23	443106	3	Nut, 5/16-18 Hex - Gear Box Assy. & Spring to Frame Mtg.	61	443108	2	Support Brkt. Mtg.	95	303873	1	Washer - Front Cowling to Frame Mtg.
24	400184	1	Screw, 5/16-18 x 3/4 Hex Hd. Cap - Spring to Frame Mtg.	62	205247	1	Cowling - Front	96	342959	1	Bracket - Belt Retainer
25	472001	1	Pipe Plug, 1/8 Screw Driver Slot Hd. - Oil Filler	63	331611	1	Grille - Front Lower	97	303873	1	Washer - Trans. to Frame Mtg.
26	463017	1	Key, #9 Woodruff - Pulley Mtg.	64	331610	1	Grille - Front Upper	98	154525	1	Safety Switch Mtg. Bracket Assy.
27	218013	1	Pulley - Tran. Input	65	153695	1	Letters - Name - Set	99	400184	2	Screw, 5/16-18 x 3/4 Hex Hd. Cap
28	412025	1	Screw, 3/8-16 x 3/4 Sq. Hd. Cup Pt. Set - Pulley to Shaft	66	445255	8	Nut - Tinnerman - Letter Retaining	100	446134	2	Lockwasher, 5/16 Med.
29	239023	1	Brake Drum	67	409026	4	Screw - #10 x 3/4 Truss Hd. Type A	101	443106	2	Nut, 5/16-18 Hex
30	463017	1	Key, #9 Woodruff - 3/16 x 3/4 - Drum Mtg.	68	445247	4	Nut - Tinnerman, Type J.	102	343783	1	Bar - Foot Rest Mtg.
31	412013	1	Screw, 5/16-18 x 1/2 Sq. Hd. Cup Pt. Set - Drum Mtg.	69	400186	2	Screw, 5/16-18 x 7/8 Hex Hd. Cap	103	460040	2	Pin, 5/32 x 1-1/4 Cotter
32	463038	2	Key 1/4 x 1-1/8 Woodruff #18 Wheel Hubs to Rear Axles	70	446134	2	Fuel Tank Brkt. Mtg.	104	458124	2	Snap Ring, Internal Tru-arc
33	239035	2	Hub - R.H. & L.H. Rear Wheel	71	443106	2	Tank Brkt. Mtg.	105	444762	1	Nut, 3/8 x 16 Hex Gripco C/Lock
34	412059	4	Screw, 3/8-16 x 1 Sq. Hd. Kn. Cup Pt. Set - Wheel Hubs to Rear Axles	72	344480	2	Stud - Hood Latch	106	447012	2	Lockwasher, 5/16 Ext. Tooth
35	400262	5	Screw, 3/8-16 x 1 Hex Hd. Cap Transmission to Frame	73	446134	2	Lockwasher, 5/16 Med. - Fuel Tank Brkt. Mtg.	107	344482	2	Spring - Hood Latch
36	153562	1	Hitch Assembly				Brkt. Mtg.	108	446110	2	Lockwasher, #8 Med.
37	400264	4	Screw, 3/8-16 x 1-1/4 Hex Hd. Cap - Hitch Mtg.				Stud - Hood Latch	109	409250	2	Screw, #8 x 5/8 Slot. Rd. Hd. Type B - Spring to Cowling Mtg.
38	446140	4	Lockwasher, 3/8 Med. - Hitch Mtg.				Lockwasher, 5/16 Med. - Hood Latch Stud Mtg.	110	344156	1	Gasket - Fuel Tank Cap

*See Owner's Manual for tire options available at your dealer
Ref. 89A and 90 included with all tire options.
Ref. 91, 92, 93 and 94 included with tire options as required.

ILLUSTRATION 2.



PARTS LIST 80-100-120 GEAR DRIVE
114024-TRANSAXLE ASSEMBLY
ILLUSTRATION 2.

Ref. No.	Part No.	Quan.	Description
2	590040	1	Snap Ring
3	545313	1	Ring - Quad
4	590041	1	Roll Pin
5	535004	1	Housing - Shift Lever
6	545314	1	Keeper - Shift Lever
7	331534	1	Shift Lever
9	545315	2	Spring
10	590042	2	Ball - Steel
11	545316	2	Fork - Shifter
12	545317	1	Rod - Shifter
14	545318	1	Rod - Shifter
15	545319	2	Axle
16	545320	10	Washer - Thrust
17	400124	4	Screw - Hex Hd. Cap - 1/4-20 x 2-1/2
18	446128	4	Lockwasher - 1/4
19	545321	1	Ring Gear
20	545322	1	Pin - Drive
21	545323	2	Block - Drive
22	545324	2	Pinion - Bevel
23	500362	1	Shaft and Gear - Brake
24	590043	2	Snap Ring
25	500363	1	Shaft and Bearing Assembly - Pinion (Incl. Ref. 26)
26	545325	1	Bearing
27	500364	1	Gear Cluster Assembly (Incl. Ref. 28)
28	545326	3	Bushing
29	545327	1	Stop - Shifter
30	545328	1	Gasket - Case and Cover
31	545329	1	Gasket - Shift Lever Housing
32	545330	1	Gear - Shifting (3rd and 4th)
33	545331	1	Gear - Shifting (1st, 2nd and Reverse)
34	545332	2	Gear - Bevel
35	545333	1	Gear - Idler
36	500365	1	Gear Cluster Assembly (Incl. Ref. 28)
37	545334	1	Spacer
38	590044	2	Snap Ring
39	500393	1	Shaft - Input with Gear - Reversing (Illus. 1 - Ref. 10)
40	545335	1	Spur Gear - Input Shaft
41	545336	2	Washer - Thrust
42	500366	2	Seal and Retainer Assembly - Oil (Incl. Ref. 45)
43	545337	1	Gear - Output
44	545338	1	Pinion - Output
45	545339	3	Seal - Oil
46	535005	2	Housing - Axle
47	500367	1	Case Assembly - Transaxle (Incl. 1 Ea. Ref. 54, 55, 57, and 63)
48	500368	1	Cover Assembly - Transaxle (Incl. 1 Ea. Ref. 54, 55, 57, 59, and 63)
49	590045	11	Screw - Socket Hd. Cap 1/4-20 x 3/4
50	590046	2	Dowel Pin
51	400186	8	Screw - Hex Hd. Cap - 5/16-18 x 7/8
52	590047	1	Plug - Magnetic Drain
53	446134	8	Lockwasher - Split - 5/16
54	545340	2	Bearing - Needle
55	545341	3	Bearing - Needle
56	545342	1	Bearing - Ball
57	545343	2	Bearing - Needle
58	545344	2	Bearing - Ball
59	545345	1	Bearing - Needle
60	545346	1	Seal - Oil
61	545347	1	Washer
62	545348	1	Shaft and Pinion
63	545349	2	Bearing - Needle
64	545350	1	Shaft - Reverse Idler
65	545351	1	Spacer - Reverse Idler
66	545352	1	Idler - Reverse
67	545353	1	Spur - Gear (22 Teeth)
68	545354	4	Bearing - Thrust
69	500369	1	Carrier Assembly - Differential (Incl. Ref. 71)
70	500370	1	Carrier Assembly - Differential (Incl. Ref. 71)
71	545355	2	Bushing
72	590048	2	"O" Ring
73	545356	1	Washer - Thrust
74	545357	1	Washer - Thrust
75	590049	1	Pipe Plug
76	545598	2	Race - Thrust

This technical drawing is an exploded view of a mechanical assembly, possibly a bicycle hub or a similar rotating component. The diagram illustrates the relationship between various parts, which are numbered 1 through 49. Key components include:

- Central Hub Body (26):** The main structural component, shown at the bottom center.
- Wheel Rim (43) and Tire (45-46):** Located at the top right, showing the outer assembly.
- Internal Components:** Various bolts, nuts, washers, and internal structural parts (e.g., 1, 2, 3, 4, 5, 6, 7, 8, 9, 10, 11, 12, 13, 14, 15, 16, 17, 18, 19, 20, 21, 22, 23, 24, 25, 27, 28, 29, 30, 31, 32, 33, 34, 35, 36, 37, 38, 39, 40, 41, 42, 47, 48, 49) are shown in their relative positions, with dashed lines indicating their assembly paths.

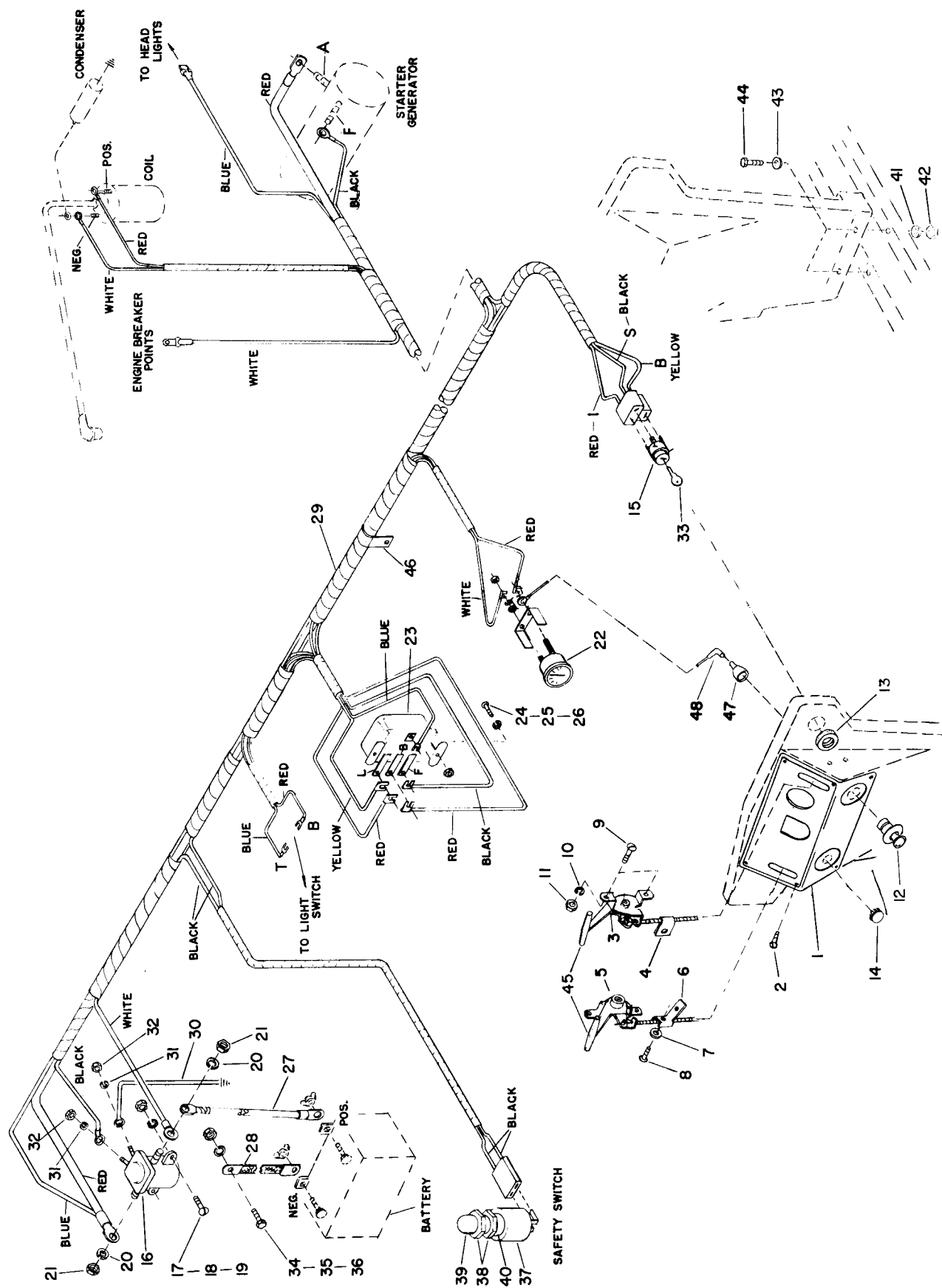
The diagram uses standard mechanical drawing conventions, with dashed lines representing the assembly sequence and alignment of the parts.

PARTS LIST 80-100-120 GEAR DRIVE - ILLUSTRATION 3.

Ref. No.	Part No.	Quan.	Description	Ref. No.	Part No.	Quan.	Description
1	205231	1	Axle - Front	25	443120	1	Nut, 1/2-20 Hex - Drag Link to Steering Arm Mtg.
2	126331	1	L.H. Spindle Assembly	26	205250	1	Rear Panel
3	461201	1	Pin, 1/4x1-1/2 Type 1 Groove - Front Wheel	27	153467	1	Steering Rod and Pinion Assembly
4	452018	1	Spindle Washer Mtg.	28	313273	1	Collar - Steering Rod
5	126332	1	Washer, 3/4 Std. - Front Wheel Spindle Mtg.	29	412013	1	Screw, 5/16-18x1 1/2 Sq. Hd. Cup Pt. Set - Steering Rod Collar Mtg.
6	269018	1	R.H. Spindle Assembly	30	315313	1	Bushing - Steering Rod
7	471219	2	Steering Arm	31	126178	1	Steering Wheel
8	400270	1	Fitting - Grease - R.H. and L. H. Spindles	32	463003	1	Key, 1/8x1 1/2 Woodruff #3 - Steering Wheel Mtg.
9	446140	1	Screw, 3/8-16x2 Hex Hd. Cap - Spindle Steering Arm Mtg.	33	444796	1	Nut, 5/8-11 Hex Gripco Center Loc - Steering Wheel Mtg.
10	443110	1	Lockwasher, 3/8 Med. - Spindle Steering Arm Mtg.	34	545288	1	Cap - Steering Wheel
11	463017	1	Nut, 3/8-16 Hex - Spindle Steering Arm Mtg.	35	302458	2	Washer, Front Wheel Retaining
12	343805	1	Key, Woodruff #9 - Spindle Steering Arm Mtg.	36	460040	2	Cotter Pin, 5/32x1-1/4 - Front Wheel Mtg.
13	443820	2	Tie Rod	37	471214	2	Grease Fitting, 1/4-28, Front Wheel Disc.
14	106348	2	Nut, 1/2-20 Hex Jam - Ball Joints to Tie Rod Mtg.	38	328106	4	Wheel Bearing - Front Axle
15	446152	2	Ball Joint	39	343829	2	Cap - Front Wheel Hub
16	443120	2	Lockwasher, 1/2 Med. - Tie Rod to R. and L.H. Tie Rod Brkt. Mtg.	*40		2	Front Wheel Disc Assy.
17	315336	1	Nut, 1/2-20 Hex - Tie Rod to R. and L.H. Tie Rod Brkt. Mtg.	*41		2	Tire Valve - Tubeless
18	400660	1	Tube - Front Axle Support	*42		2	Tire - Front Wheel
19	446162	1	Screw, 5/8-18x5 Hex Hd. Cap - Front Axle to Frame	*43		2	Inner Tube - Front Tire
20	443828	1	Lockwasher, 5/8 Lt. - Front Axle to Frame	44	471210	1	Fitting, Grease, 45° Elbow - Axle Pivot Center
21	343773	1	Nut, 5/8-18 Hex - Front Axle to Frame	45	342924	1	Screen - R.H. Side
22	443820	2	Drag Link	46	342923	1	Screen - L.H. Side
23	106348	2	Nut, 1/2-20 Hex Jam - Ball Joint to Drag Link	47	404018	4	Screw, 1/4-20x3/4 Slotted Truss Hd. Mach.
24	446152	2	Ball Joint	48	453023	4	Washer, 1/4 STD.
		2	Lockwasher, 1/2 Med. - Drag Link to Steering Arm Mtg.	49	443102	4	Nut, 1/4-20 Hex

*See Owner's Manual for tire options available at your dealer.
Ref. 37, 38, 39 included with all tire options.
Ref. 40, 41, 42, 43 included with tire options as required.

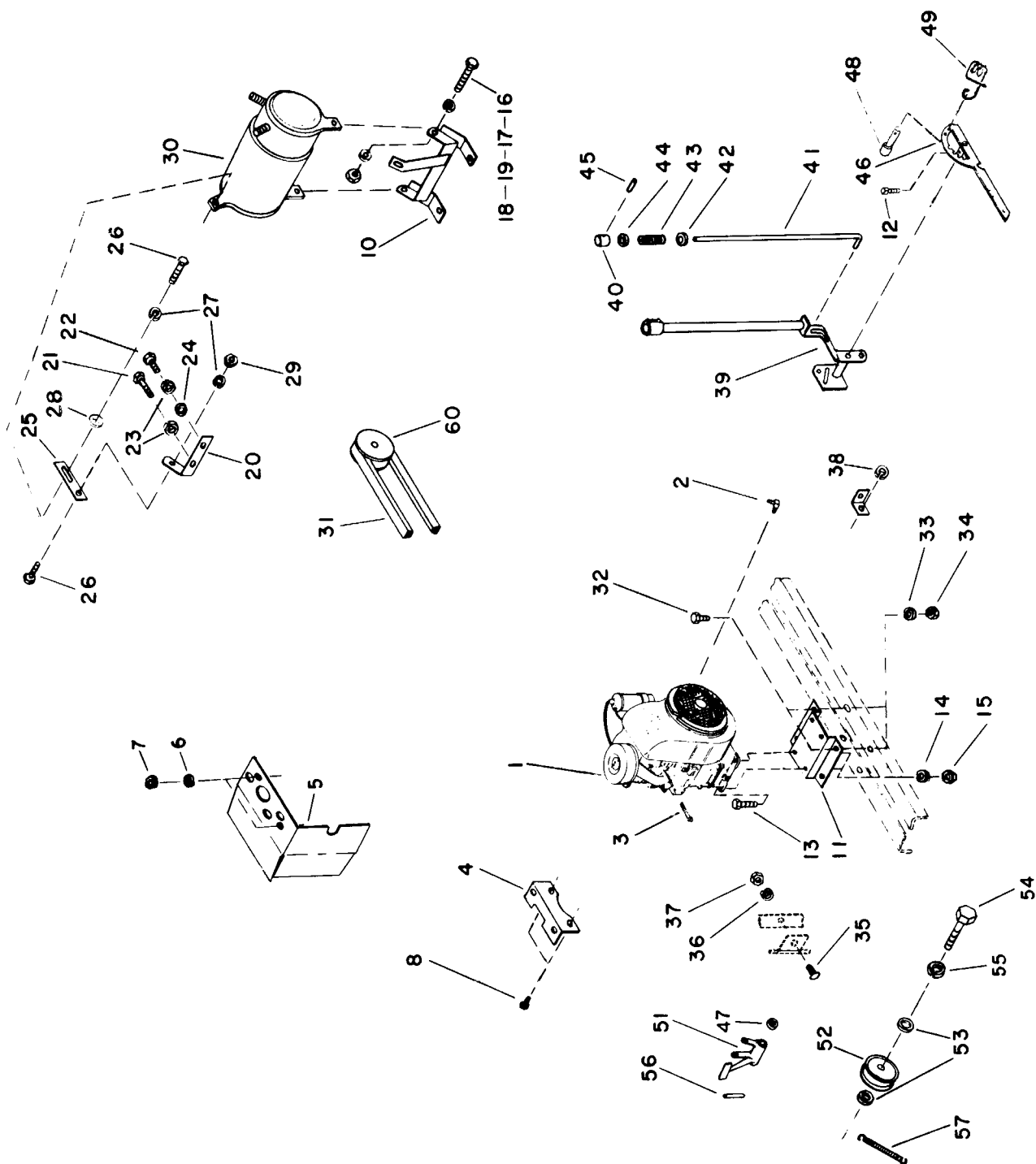
ILLUSTRATION 4.



PARTS LIST 80 GEAR DRIVE - ILLUSTRATION 4.
See Page 15 for Parts Used on 100-120 Tractors
See Pages 16-17 for 100-120 Electrical System

Ref. No.	Part No.	Quan.	Description	Ref. No.	Part No.	Quan.	Description
1	328977	1	Plate - Dash Panel	24	404018	2	Screw, 1/4-20 x 3/4 Truss Hd. Machine -
2	409518	6	Screw, #7 x 5/16 Rd. Hd. Drive - Dash Panel Mtg.	25	446128	2	Voltage Regulator Mtg.
3	153537	1	Throttle Control and Clip Assembly	26	443102	2	Lockwasher, 1/4 - Med. - Voltage Regulator Mtg.
4	303451	1	Clip - Throttle Control Mtg.	27	343797	1	Nut, 1/4-20 - Hex Voltage Regulator Mtg.
5	153536	1	Choke Control and Bracket Assembly	28	342684	1	Cable - Battery to Solenoid
6	325819	1	Bracket - Choke Control Mtg.	29	119164	1	Cable - Battery to Ground
7	455008	1	Washer, 3/16 - Bracket to Choke Control Assembly Mtg.	30	112206	1	Wiring Harness Assembly
8	403858	1	Screw, #8-32 x 1/2 Truss Hd. Machine - Bracket to Choke Control Assembly Mtg.	31	446116	2	Cable - Solenoid to Ground
9	403914	4	Screw, #10-24 x 3/4 Truss Hd. Machine - Choke and Throttle Control to Panel	32	444312	2	Lockwasher, #10 Med. - Starter Safety Switch to Solenoid
10	446116	4	Lockwasher, #10 - Med. - Choke and Throttle Control to Panel	33	343060	1	Nut, #10-32 Hex - Starter Safety Switch to Solenoid
11	444310	4	Nut, #10-24 - Hex - Choke and Throttle Control to Panel	34	400188	1	Key - Ignition (Set of 2)
12	113728	1	Lighter Plug Assy.	35	446134	1	Screw, 5/16-18 x 1 - Hex Hd. Cap - Ground Cable to Panel Mtg.
13	343786	1	Nut - Ignition Switch Mtg.	36	443106	1	Lockwasher, 5/16 - Med. - Ground Cable to Panel Mtg.
14	325908	1	Plug - Button - Light Switch Hole	37	126339	1	Nut, 5/16-18 - Hex - Ground Cable to Panel Mtg.
15	126337	1	Ignition Switch Assembly (Incl. Ref. 13 and 33)	38	343784	2	Safety Starter Switch Assy. (Incl Ref. 42 and 43)
16	126070	1	Solenoid - Starter	39	343785	1	Nut, Safety Switch Mtg.
17	404016	2	Screw, 1/4-20 x 5/8 Slotted Truss Hd. Machine - Solenoid Mtg.	40	344042	1	Boot - Rubber Protection - Safety Switch
18	446128	2	Lockwasher, 1/4 Med. - Solenoid Mtg.	41	446140	2	Spacer - Safety Switch Mtg.
19	443102	2	Nut, 1/4-20-Hex - Solenoid Mtg.	42	443110	2	Lockwasher, 3/8 - Med. - Rear Panel to Frame
20	446134	2	Lockwasher, 5/16 Med. - Starter Cable to Solenoid Mtg.	43	303873	2	Nut, 3/8-16 Hex - Rear Panel to Frame
21	443808	2	Nut, 5/16-24 - Hex Jam - Starter Cable to Solenoid Mtg.	44	400264	2	Washer - Rear Panel to Frame
22	107917	1	Ammeter	45	342644	1	Screw, 3/8-16 x 1-1/4 Hex Hd. Cap, Rear Panel to Frame
23	107927	1	Regulator - Voltage	46	344348	1	Knob - (Each) Throttle Lever, Choke Lever
				47	113727	1	Clip - Wire Harness Retainer
				48	343025	1	Socket Assy. - Lighter
							Wire Assy. - Lighter

ILLUSTRATION 5.

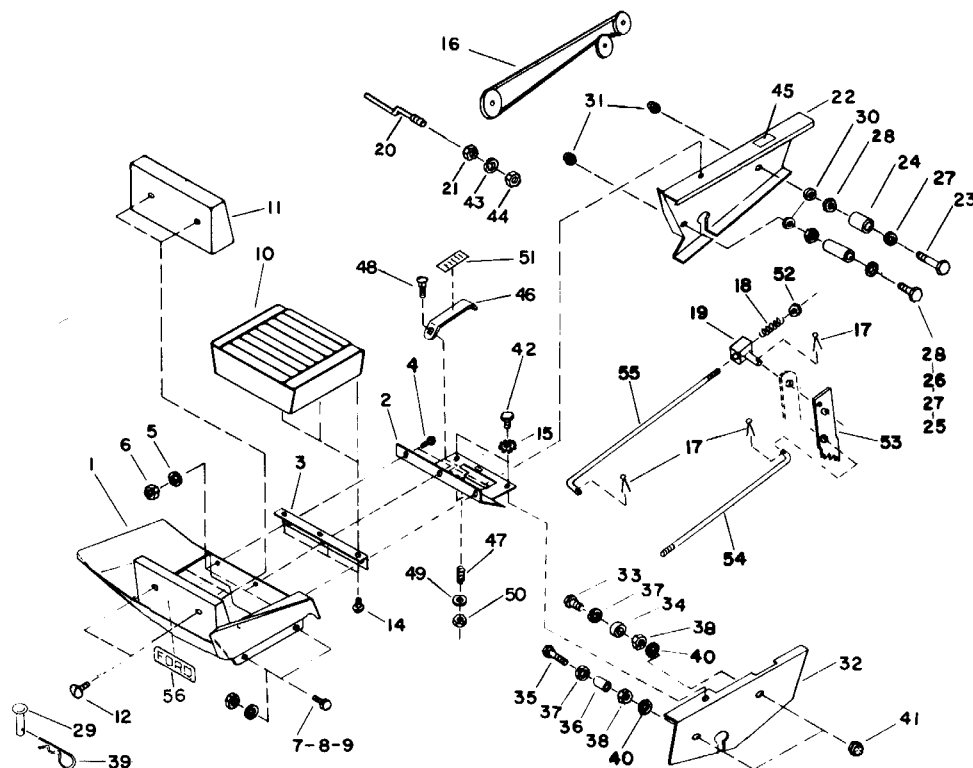


PARTS LIST 80 GEAR DRIVE - ILLUSTRATION 5.
See Page 15 for Parts Used on 100-120 Tractors

Ref. No.	Part No.	Quan.	Description	Ref. No.	Part No.	Quan.	Description
1	113699	1	Engine Kohler, K-181 Spec. #30290D	30	107926	1	Starter/ Generator Assembly
2	314044	1	Fitting - Fuel Line on Carburetor	31	343015	1	Belt - Start/ Gen. Drive
3	403532	1	Screw, #8-32 x 1-7/8 Rd. Hd. Machine - Air Horn Mtg.	32	342861	4	Bolt - Engine Assembly to Frame Mtg.
4	126441	1	Upper Bracket Assembly - Front Shield	33	446140	4	Lockwasher, 3/8 Med. - Engine Assembly to Frame Mtg.
5	331585	1	Deflector - Heat	34	443110	4	Nut, 3/8-16 Hex - Engine Assembly to Frame Mtg.
6	452006	2	Washer, 5/16 SAE - Deflector Mtg.	35	403936	1	Screw, #10-32 x 1/2 Truss Hd. Machine - Throttle Control to Engine Mtg.
7	443106	2	Nut, 5/16-18 Hex - Deflector Mtg.	36	446116	1	Lockwasher, #10 Med. - Throttle Control to Engine Mtg.
8	400256	2	Screw, 3/8-16 x 5/8 Hex Hd. Cap - Upper Shield Bracket Mtg.	37	444312	1	Nut, #10-32 Hex - Throttle Control to Engine Mtg.
10	119144	1	Start - Gen. Bracket Assembly - Lower	38	446110	1	Lockwasher, #8 Med. - Choke Control Clip to Air Horn Mtg.
11	331592	1	Bracket - Engine Mtg.	39	126334	1	Tool Lift Lever Assembly
12	412013	1	Screw, 5/16-18 x 1/2 Sq. Hd. Cup Pt. Set	40	315349	1	Plunger - Lift Lever
13	400266	4	Screw, 3/8-16 x 1-1/2 Hex Hd. Cap - Bracket to Engine Mtg.	41	343779	1	Rod - Lift Lever Plunger
14	446140	4	Lockwasher, 3/8 Med. - Bracket to Engine Mtg.	42	310690	1	Collar
15	443110	4	Nut, 3/8-16 Hex - Bracket to Engine Mtg.	43	315344	1	Spring - Lift Lever Plunger
16	400190	2	Screw, 5/16-18 x 1-1/4 Hex Hd. Cap - Start/ Gen. to Lower Bracket Mtg.	44	343332	1	Washer - Lift Lever Handle Spacer
17	446134	2	Lockwasher, 5/16 Med. - Start/ Gen. to Lower Bracket Mtg.	45	461355	1	Pin, 1/8 x 1/2 Roll - Lift Lever Handle Spacer Mtg.
18	443106	2	Nut, 5/16-18 Hex - Start/ Gen. to Lower Bracket Mtg.	46	126333	1	Lift Sector Assembly
19	308949	AR	Washer - Start/ Gen. to Bracket Mtg.	47	326699	1	Spacer - Lift Lever Mtg.
20	107942	1	Start/ Gen. - Bracket Assembly - Upper	48	344008	1	Pin, Clevis - Lift Lever Stop
21	400258	1	Screw, 3/8-16 x 3/4 Hex Hd. Cap - R.H. Upper Bracket Mtg.	49	341655	1	Spring - Clevis Pin Retainer
22	400262	1	Screw, 3/8-16 x 1 Hex Hd. Cap - L.H. Upper Bracket Mtg.	51	239031	1	Pedal - Brake and Clutch
23	446140	2	Lockwasher, 3/8 Med. - R.H. & L.H. Upper Bracket Mtg.	52	108151	1	Clutch and Idler Pulley
24	452008	1	Washer - 3/8 Std. - R.H. Upper Bracket Mtg.	53	342863	2	Spacer - Idler Pulley
25	315420	1	Link - Start/ Gen. Mtg.	54	400640	1	Screw, 5/8-18 x 1-1/4 Hex Hd. Cap - Clutch & Idler Pulley Mtg.
26	400188	2	Screw, 5/16-18 x 1 Hex Hd. Cap - Upper Start/ Gen. and Link Mtg.	55	446164	1	Lockwasher, 5/8 Med. - Clutch & Idler Pulley Mtg.
27	446134	2	Lockwasher, 5/16 - Med./ Upper Start - Gen. and Link Mtg.	56	461377	1	Pin, 5/32 x 1-1/8 Roll - Clutch & Brake Pedal Mtg.
28	326213	1	Washer - 5/16 - Upper Start/ Gen. and Link Mtg.	57	344716	1	Spring - Belt Tension
29	443106	1	Nut, 5/16-18 Hex - Upper Start/ Gen. and Link Mtg.	60	315404	1	Pulley - Starter/ Generator

AR - As Required

ILLUSTRATION 6.

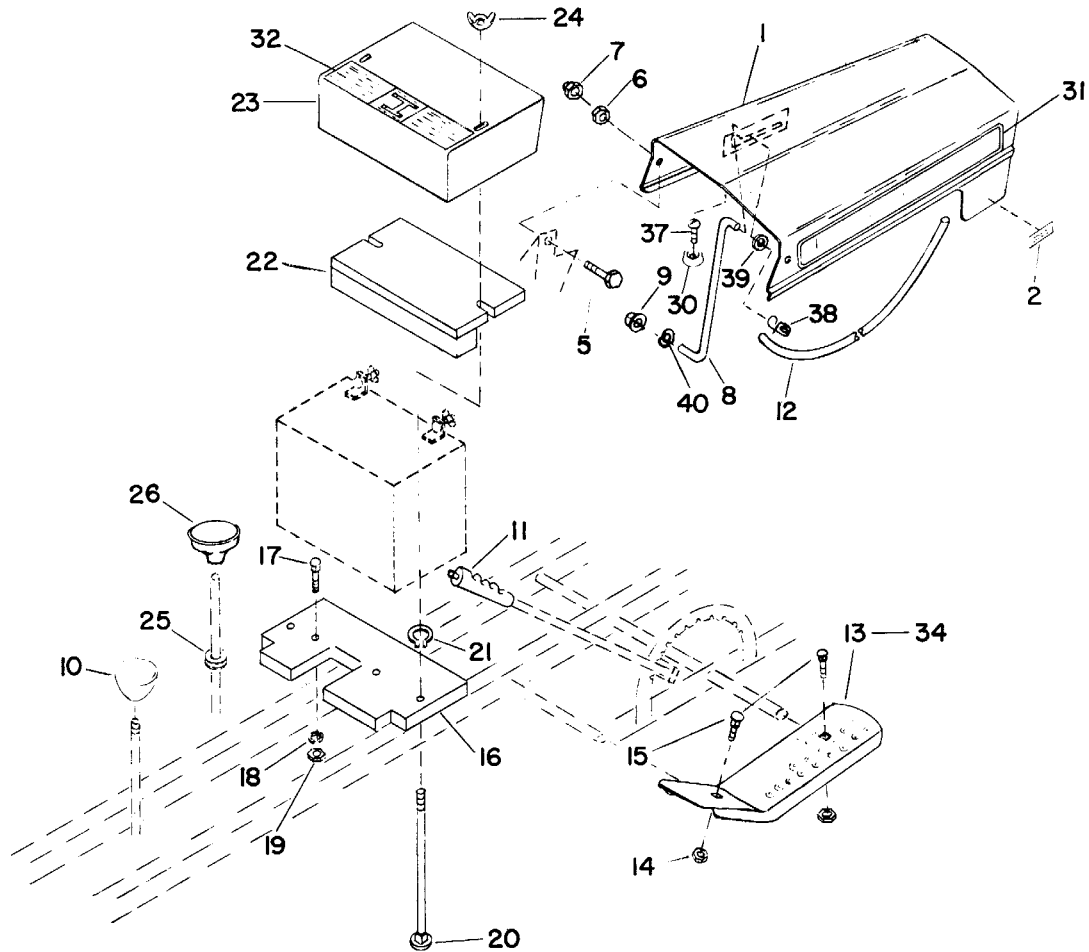


PARTS LIST 80-100-120 GEAR DRIVE - ILLUSTRATION 6.

Ref. No.	Part No.	Quan.	Description
1	119114	1	Fender and Seat Assembly
2	331800	1	Apron
3	342562	1	Hinge - Seat
4	400104	3	Screw, 1/4-20 x 1/2 Hex Hd. Cap
5	446128	3	Lockwasher, 1/4 Med. - Seat
6	443102	3	Nut, 1/4-20 Hex - Seat Hinge & Apron to Fender Mtg.
7	400258	3	Screw, 3/8-16 x 3/4 Hex Hd. Cap - Seat to Frame
8	446140	3	Lockwasher, 3/8 Med. - Seat to Frame
9	443110	3	Nut, 3/8-16 Hex - Seat to Frame
10	328949	1	Cushion - Seat
11	331532	1	Cushion - Back
12	404018	2	Screw, 1/4-20 x 3/4 Truss Hd. Mach. - Back Cushion Mtg.
14	404018	3	Screw, 1/4-20 x 3/4 Truss Hd. Mach. - Seat to Hinge
15	447010	2	Washer, External Tooth
16	343017	1	Belt - Transmission
17	460014	3	Pin, 5/32 x 3/4 Cotter
18	309506	1	Spring - Brake Actuator
19	344715	1	Retainer - Brake Rod
20	313283	1	Stud - Belt Retainer
21	443806	1	Nut, 5/16-18 Hex Jam
22	126471	1	Belt Shield Assy. - L.H.
23	400204	1	Screw, 5/16-18 x 3-1/2 Hex Hd. Cap - Front Belt Shield Mtg.
24	325499	1	Spacer - Belt Shield & Parking Brake
25	400198	1	Screw, 5/16-18 x 2-1/4 Hex Hd. Cap - Rear Belt Shield Mtg.
26	342648	1	Spacer - Rear Belt Shield Mtg.
27	446134	2	Lockwasher, 5/16 Med. - Belt Shield Mtg.

Ref. No.	Part No.	Quan.	Description
28	443806	2	Nut, 5/16-18 Hex Jam - Spacers to Tractor Retainer
29	461469	1	Pin, 1/2 x 1-15/16 Clevis - Hitch Pin
30	453009	2	Washer, 5/16 SAE - Belt Shield Mtg.
31	445010	2	Nut, 5/16-18 Hex Acorn - Belt Shield Mtg.
32	126336	1	R.H. Shield Assembly
33	400190	1	Screw, 5/16-18 x 1-1/4 Hex Hd. Cap - Front R.H. Shield Mtg.
34	325522	1	Spacer - Front R.H. Shield
35	400198	1	Screw, 5/16-18 x 2-1/4 Hex Hd. Cap - Rear R.H. Shield Mtg.
36	342648	1	Spacer - Rear R.H. Shield
37	446134	2	Lockwasher, 5/16 Med. - R.H. Shield Mtg.
38	443806	2	Nut, 5/16-18 Hex Jam - Spacers to Tractor Mtg.
39	460312	1	Hairpin Cotter, Rein Leitzke #LHCOT - 2
40	453009	2	Washer, 5/16 SAE - R.H. Shield Mtg.
41	445010	2	Nut, 5/16-18 Hex Acorn - R.H. Shield Mtg.
42	400104	2	Screw, 1/4-20 x 1/2 - Hex Hd. Cap - Apron to R.H. & L.H. Shield Mtg.
43	446134	1	Lockwasher, 5/16 Med.
44	443106	1	Nut, 5/16-18 Hex
45	344713	1	Decal - Brake Lock
46	344194	1	Stop, Shift
47	311032	1	Spring
48	440042	1	Bolt, 1/4-20 x 3/4, Short Sq. Nk. Carr.
49	453023	1	Washer, 1/4 SAE
50	444708	1	Nut, 1/4-20 Hex Gripco C/Lock
51	344193	1	Decal - Shift Stop
52	444718	1	Nut, 5/16-18 Hex Gripco C/Lk.
53	344710	1	Arm - Parking Brake
54	344711	1	Rod - Parking Brake Control
55	344717	1	Rod - Brake Actuator
56	343021	1	Decal - Name

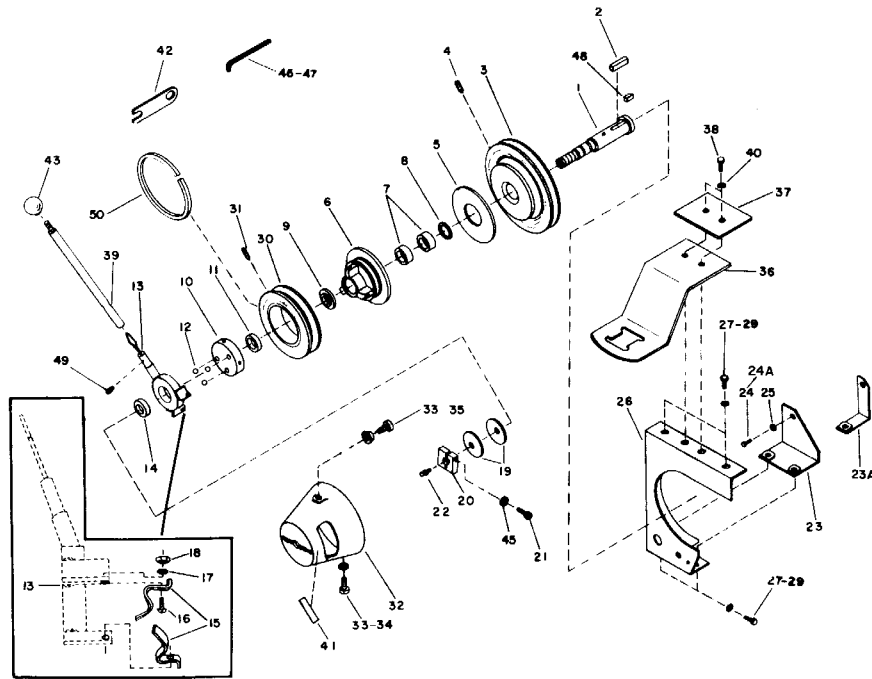
ILLUSTRATION 7.

PARTS LIST 80 GEAR DRIVE - ILLUSTRATION 7.
See Page 15 for Parts Used on 100-120 Tractors

Ref. No.	Part No.	Quan.	Description
1	126431	1	Hood Assembly
2	344483	2	Decal - L.H. & R.H. Hood Latch Instr.
5	400188	2	Screw, 5/16-18x1 Hex Hd. Cap
6	443806	2	Nut, 5/16-18 Hex Jam
7	445010	2	Nut, 5/16-18 Hex Acorn
8	342613	1	Rod - Hood Support
9	445252	1	Nut, 1/4 Push - On Cap Type B Tinnerman - Hood Support Rod to Rear Panel
10	342582	1	Knob - Shift Lever
11	341833	1	Grip - Lift Lever
12	342427	1	Fuel Line
13	331754	1	Foot Rest - R.H.
14	444708	4	Nut, 1/4-20 Hex Gripco C/Lock - Foot Rest Mtg.
15	441668	4	Screw, 1/4-20 x 1-1/4 Reg. Sq. Neck Carriage - Foot Rest Mtg.
16	342593	1	Block - Battery Carrier
17	440050	2	Bolt, 1/4-20 x 1-1/2 Sh. Sq. Nk. Carr. - Carrier Block to Frame Mtg.
18	446128	2	Lockwasher, 1/4 Med. - Carrier Block to Frame Mtg.

Ref. No.	Part No.	Quan.	Description
19	443102	2	Nut, 1/4-20 Hex - Carrier Block to Frame Mtg.
20	342590	2	Bolt - Battery Hold Down
21	458054	2	Ring, Retaining Tru-Arc - Battery Hold Down Bolt Retaining
22	331549	1	Block - Battery Hold Down
23	331543	1	Cover - Battery
24	445612	2	Nut, 1/4-20 Std. Wing - Battery Cover Mtg.
25	341718	1	Grommet - Parking Brake
26	304257	1	Handle - Parking Brake
30	343807	1	Bumper, Rubber - Rear Panel Hood
31	343020	2	Decal - Name and Model
32	331802	1	Decal - Gear Shift
34	331755	1	Foot Rest - L.H.
37	409250	1	Screw, #8 x 5/8 Rd. Hd. Bumper Fastening
38	341655	1	Spring
39	453023	1	Washer, SAE
40	454026	1	Wave Washer, Shakeproof

ILLUSTRATION 8.



PARTS LIST GEAR DRIVE - POWER DRIVE CLUTCH FOR 80-100-120 - ILLUSTRATION 8.

Ref. No.	80 Part No.	100 & 120 Part No.	Quan.	Description	Ref. No.	80 Part No.	100 & 120 Part No.	Quan.	Description
1	331545	331547	1	Extension Shaft	24A	400256		1	Screw - 3/8-16x5/8 Hex Hd. Cap - Lower Bracket to Engine Mtg.
2	342606	342607	2	Key - Extension & Engine Pulley Mtg.					
3	239021	239022	1	Pulley - Engine	25		446146	1	Lockwasher - 7/16 Med. Lower Brkt. to Engine Mtg.
4	415527	415527	2	Screw - 5/16-18x3/4 Soc. Hd. Kn. Cup Pt. Set Extension and Engine Pulley Mtg.	26	126442	126442	1	Front Shield Assembly
					27	400182		4	Screw, 5/16-18x5/8 Hex Hd. Cap - Front Shield Mtg.
5	331546	331546	1	Disc - Friction Clutch	27		400182	3	Screw, 5/16-18x5/8 Hex Hd. Cap - Front Shield Mtg.
6	153489	153494	1	P.T.O. Pulley Assembly	29	446134		4	Lockwasher, 5/16 Med. Front Shield Mtg.
7	342612	342612	2	Bearing - Needle	29		446134	3	Lockwasher, 5/16 Med. Front Shield Mtg.
8	342596	342596	1	Seal - Oil	30	239046	239046	1	Pulley - Rotary - P.T.O.
9	342597	342597	1	Washer	31	415559	415559	3	Screw, 5/16-18x1 Soc. Hd. Cup Pt. Set
10	153493	153493	1	Cam Backing Plate Assy.	32	218015	218016	1	Cover - Clutch
11	310646	310646	1	Bearing - Ball	33	342599	342599	3	Screw - Cover Mtg.
12	465009	465009	3	Ball - 3/8 Dia. Steel - Cam Clutch	34	342594	342594	2	Washer - Cover Mtg.
13	154067	154067	1	Cam Plate Assembly	35	342849	342849	1	Cap - Anti-Rattle
14	310646	310646	1	Bearing - Ball	36	344540	331910	1	Spring - Clutch Retainer
15	342742	342742	2	Spring - Cam Engaging	37	344541	344541	1	Plate - Spring Mtg.
16	402056	402056	2	Screw - #8-32x3/8 Rd. Hd. Mach. - Cam Spring to Cam Stop Mtg.	38	400104	400104	2	Screw, 1/4-20x1/2 Hex Hd. Cap
17	446110	446110	2	Lockwasher - #8 Med. - Cam Spring to Cam Stop Mtg.	39	154059	154059	1	Clutch Lever Assembly
18	444306	444306	2	Nut - #8-32 Hex - Cam Spring to Cam Stop Mtg.	40	446128	446128	2	Lockwasher, 1/4 Med.
19	342610	342610	2	Washer - Spring	41	342662	342662	1	Decal - Clutch
20	342991	342991	1	Nut - Clutch Lock	42	342850	342850	1	Gauge - Clutch Adjusting
21	434023	434023	1	Screw - 1/4-20x1-1/4 - Soc. Hd. Cap - Clutch Lock Nut	43	342582	342582	1	Knob - Clutch Lever
22	471229	471229	1	Fitting - Grease 1/4-28 NF Extension Shaft	45	446128	446128	1	Lockwasher, 1/4 Med. Clutch Lock Nut
23	153496		1	Lower Bracket Assembly - Front Shield	46	471001	471001	1	Wrench, 5/16 - Soc. Hd. Cap
23A		153495	1	Lower Bracket Assy. - Front Shield	47	471002	471002	1	Wrench, 1/4 - Soc. Hd. Cap
24		400328	1	Screw - 7/16-14x5/8 Hex Hd. Cap - Lower Brkt. to Eng. Mtg.	48	343304	343304	1	Seal - Grease
					49	414009	414009	1	Screw, #10-24x1/4 Set
					50	458442	458442	1	Ring, External Snap - Set Screw Retaining

PARTS LIST GEAR DRIVE - 100 AND 120 TRACTORS

NOTE: The following parts from the 80 tractor are not used in the 100 and 120 tractors. The 80, 100, and 120 tractors are otherwise similar.

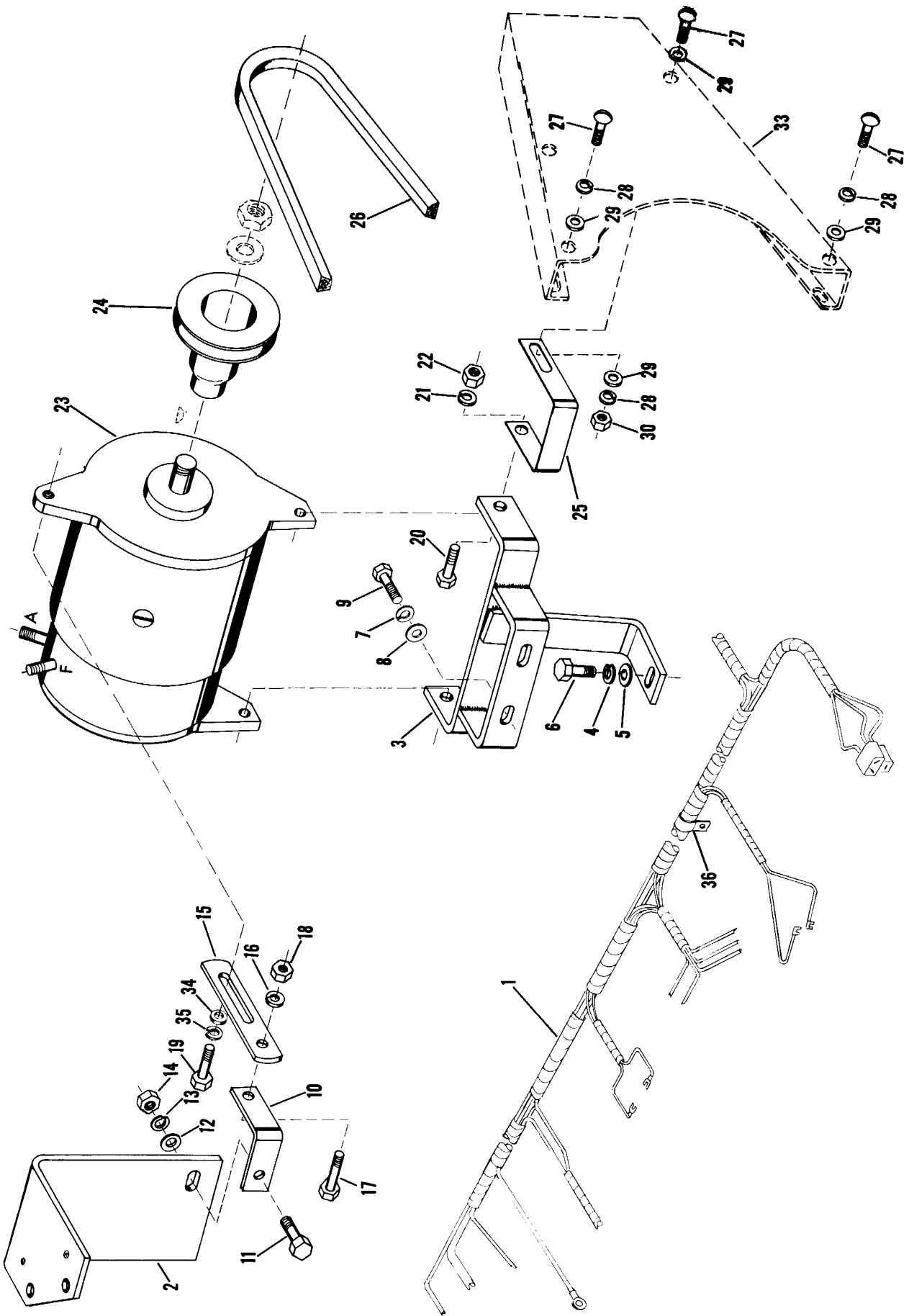
Part No.	Illus. No.	Ref. No.	Part No.	Illus. No.	Ref. No.	Part No.	Illus. No.	Ref. No.
114025	1	1	443106	5	7	403936	5	35
205245	1	62	Kohler	5	1	400256	5	8
153537	4	3	403532	5	3	119144	5	10
153536	4	5	126441	5	4	400190	5	16
325819	4	6	400258	5	21	446134	5	17
455008	4	7	400262	5	22	443106	5	18
403858	4	8	446140	5	23	308949	5	19
119164	4	29	452008	5	24	107942	5	20
331592	5	11	315420	5	25	446116	5	36
400266	5	13	446134	5	27 *	444312	5	37
446140	5	14	443106	5	29	446110	5	38
443110	5	15	107926	5	30	331524	7	31
342861	5	32	315404	5	60	331523	7	31
452006	5	6	315402	5	31	342427	7	12

* Discard 1 only

NOTE: The following parts for the 100 and 120 tractor are not illustrated. These parts are very similar to (or take the place of) the parts shown for the 80 tractor.

100 & 120 Part No.	Quan.	Description	80 Part No.	Illus. No.	Ref. No.
153810	1	Engine Assembly - K-301 - Spec. No. 47238-B - 120	Kohler	5	1
153030	1	Engine Assembly - K-241 - S Spec. No. 46519-D - 100	Kohler	5	1
114033	1	Frame Assembly	114025	1	1
205248	1	Front Cowling	205245	1	62
154600	1	Throttle Control Assembly	153537	4	3
154602	1	Choke Control Assembly	153536	4	5
344772	1	Support - Choke Cable	325819	4	6
403936	1	Screw, #10-32x1/2 - Choke Cable to Support			
204268	1	Manifold - Exhaust			
342428	1	Line - Fuel	342427	7	12
315382	2	Bolt - Engine Mounting - R.H.	342861	5	32
343032	2	Decal - Name and Model - 100	343020	7	31
343279	2	Decal - Name and Model - 120	343020	7	31
441520	2	Bolt - Engine Mounting - L.H.	342861	5	32

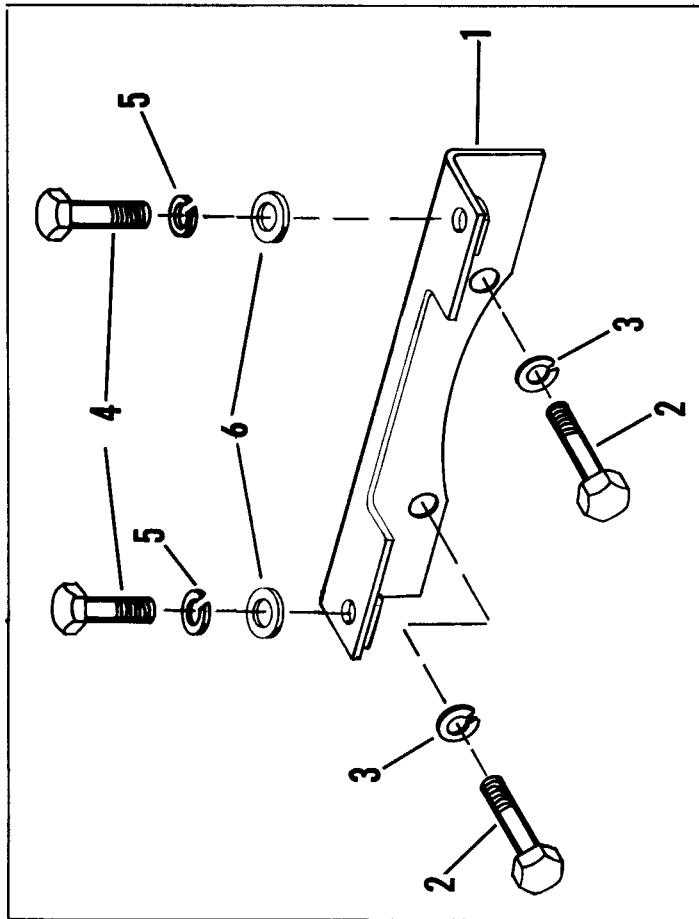
ILLUSTRATION 9.



PARTS LIST GEAR DRIVE - 100-120 ELECTRICAL SYSTEM - ILLUSTRATION 9.

Ref. No.	Part No.	Quan.	Description	Ref. No.	Part No.	Quan.	Description
1	119165	1	Wiring Harness - (Wiring Diagram - Similar to #29 See Illus. #4)	18	443106	1	Nut - 5/16-18 Hex
2	342919	1	Bracket - Start/Gen. Adjusting Strap	19	400188	1	Screw - 5/16-18 x 1 Hex Hd. Cap
3	113033	1	Bracket Assembly - Start/Gen.	20	400190	2	Screw - 5/16-18 x 1-1/4 Hex Hd. Cap
4	446140	1	Lockwasher - 3/8 Med.	21	446134	2	Lockwasher - 5/16 Med.
5	303873	1	Washer - 3/8 SAE	22	443106	2	Nut - 5/16-18 Hex
6	400266	1	Screw - 3/8-16 x 1-1/2 Hex Hd. Cap	23	113034	1	Start/Gen. Assembly
7	446140	2	Lockwasher - 3/8 Med.	24	204267	1	Pulley - Start/Gen.
8	303873	2	Washer - 3/8 SAE	25	326226	1	Brace - Belt Shield
9	400262	2	Screw - 3/8-16 x 1 Hex Hd. Cap	26	343031	1	Belt - Start/Gen.
10	326222	1	Support - Start/Gen. Adjusting Strap	27	402222	3	Screw - 1/4-20 x 1/2 Rd. Hd. Mach.
11	400262	1	Screw - 3/8-16 x 1 Hex Hd. Cap	28	446128	3	Lockwasher - 1/4 Med.
12	453011	1	Washer - 3/8 SAE	29	453023	4	Washer - 1/4 SAE
13	446140	1	Lockwasher - 3/8 Med.	30	443802	1	Nut - 1/4-20 Hex Jam
14	443110	1	Nut - 3/8-16 Hex	33		1	Kohler Engine Belt Shield (Order from Kohler Co.)
15	326228	1	Link - Start/Gen. Adjusting	34	326213	1	Washer - 3/8
16	446134	1	Lockwasher - 5/16 Med.	35	446134	1	Lockwasher - 5/16 Med.
17	400188	1	Screw - 5/16-18 x Hex Hd. Cap	36	344348	1	Clip - Wire Harness Retainer

ILLUSTRATION 10.



PARTS LIST GEAR DRIVE - 100-120 - ILLUSTRATION 10
FRONT GUARD BRACKET ASSEMBLY

Ref. No.	Part No.	Quan.	Description
1	154478	1	Bracket - Front Guard - Upper
2	400328	2	Screw - 7/16-14 x 5/8 Hex Hd. Cap
3	446146	2	Lockwasher - 7/16 Med.
4	400182	2	Screw - 5/16-18 x 5/8 Hex Hd. Cap
5	446134	2	Lockwasher - 5/16 Med.
6	452008	2	Washer - 3/8 SAE

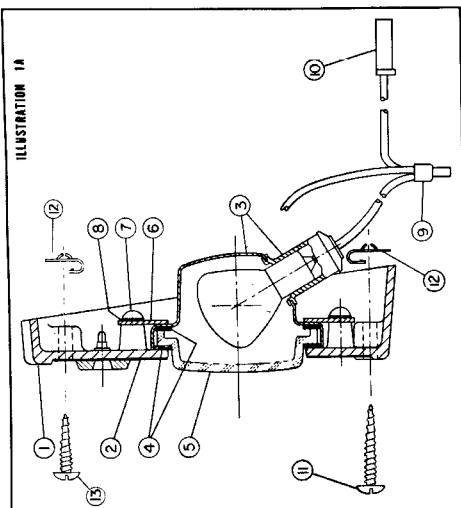
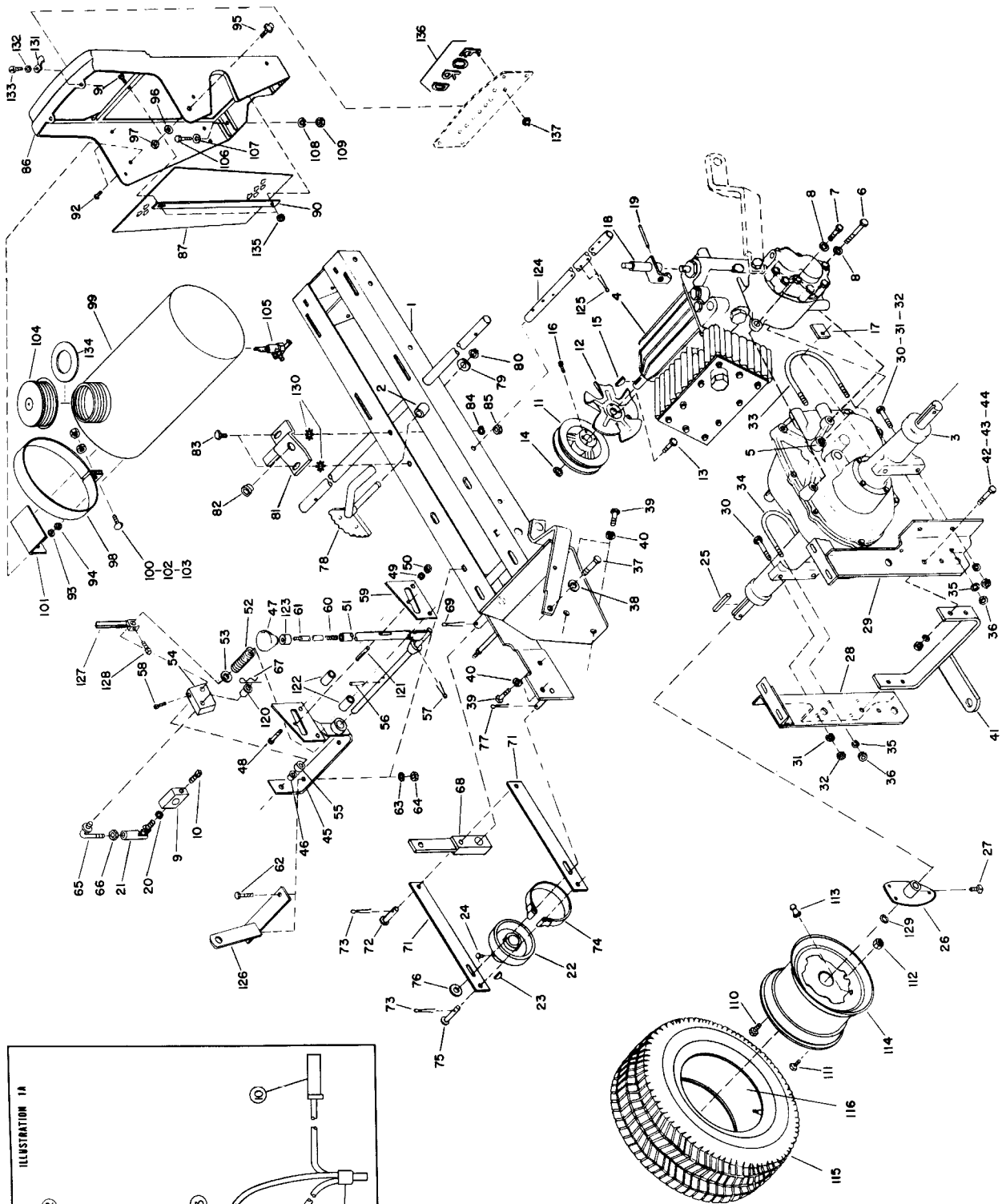
PARTS LIST

FORD TRACTOR

NO. 100 HYDROSTATIC DRIVE

NO. 120 HYDROSTATIC DRIVE

ILLUSTRATION 1.



PARTS LIST HYDROSTATIC DRIVE 100-120 - ILLUSTRATION 1:

Ref. No.	Part No.	Quan.	Description	Ref. No.	Part No.	Quan.	Description	Ref. No.	Part No.	Quan.	Description
1	114042	1	Frame Assembly	28	153837	1	Hitch Bracket Assy. L.H.	56	461377	1	Pin, 5/32 x 1-1/8 Roll - Spring to Shaft Mtg.
2	315393	2	Bushing - Steering Quad. Pivot	29	153838	1	Hitch Bracket Assy. R.H.	57	460038	1	Pin, 5/32 x 1 Cotter
3	114038	1	Transaxle w/Ref. 5 - See Breakdown on Page 22 & 23	30	400268	4	Screw, 3/8-16 x 1-3/4 Hex Hd. Cap - Hitch Bracket to Transaxle Mtg.	58	412020	1	Screw, 5/16-18 x 1 Sq. Hd. Cup Pt. Set - Control Arm to Shaft Mtg.
4	114039	1	Hydrogear - Service on Exchange Basis	31	446140	4	Lockwasher, 3/8 Med. - Hitch Bracket to Transaxle Mtg.	59	344244	1	Quadrant
5	343338	1	Coupling - Transaxle to Hydrodrive	32	443110	4	Nut, 3/8-16 Hex - Hitch Bracket to Transaxle Mtg.	60	315344	1	Spring - Control Lever
6	400270	1	Screw, 3/8-16 x 2 Hex Hd. Cap	33	343310	1	"U" Bolt - R.H. Hitch Bracket	61	343590	1	Plunger - Speed Control
7	400264	2	Lower Transaxle to Hydrogear	34	343311	1	"U" Bolt - L.H. Hitch Bracket	62	400190	2	Screw, 5/16-18 x 1-1/4 Hex Hd. Cap
8	446140	3	Cap - Transaxle to Hydrogear	35	446134	4	Lockwasher, 5/16 Med. - "U" Bolt Mtg.	63	446134	2	Lockwasher, 5/16 Med.
9	343344	1	Lockwasher, 3/8 Med. Transaxle to Hydrogear	36	443106	4	Nut, 5/16-18 Hex - "U" Bolt Mtg.	64	443106	2	Nut, 5/16-18 Hex - Speed Cont. and Switch Mtg. Brkt. to Frame
10	410501	1	Arm - Speed Control	37	400408	1	Screw, 1/2-13 x 1-1/2 Hex Hd. Cap - Transmission Assembly to Frame	65	153858	1	Link Assembly
11	239034	1	Pt. Set - Speed Control Arm to Pump Control Shaft Mtg.	38	446152	1	Mtg. - R.H.	66	443808	1	Nut, 5/16-24 Hex Jam
12	331679	1	Pulley - Hydrogear Input	39	400262	4	Lockwasher, 1/2 Med. - Transmission Assembly to Frame	67	460306	1	Pin - Hair, Rein Leitzke #LHCOT-1 - Link Assy. to Cont. Arm Mtg.
13	403582	3	Fan	40	446140	4	Mtg. - R.H.	68	154561	1	Brake Actuator Arm Assy.
14	458103	1	Screw, #10-24 x 1/2 Hex Hd. Mach. - Fan to Pulley Mtg.	41	153562	1	Screw, 3/8-16 x 1 Hex Hd. Cap - Transmission Assy. to Frame	69	460040	1	Pin - Cotter, 5/32 x 1-1/4 - Brake Actuator Arm Retainer
15	463009	1	Ring, Tru-Arc #5000 - 75 Retaining Pulley Stop	42	400264	4	Mtg. - L.H. and Front	71	343335	2	Arm - Brake Slide
16	412017	1	Key, 5/32 x 5/8 Woodruff #5 - Pulley Assy. to Hydrogear Mtg.	43	446140	4	Lockwasher, 3/8 Med. - Transmission Assy. to Frame	72	461487	1	Pin, 3/8 x 1-1/4 Clevis - Brake Slide Arm Mtg.
17	343326	1	Screw, 5/16-18 x 3/4 Knurled Cup Pt. Sq. Hd. Set - Pulley Assy. to Hydrogear Mtg.	44	443110	4	Mtg. - L.H. and Front	73	460014	2	Pin, 3/32 x 3/4 Cotter - Clevis Pin Retainer
18	153863	1	Clip - "U" Bolt Retainer	45	154310	1	Hitch Assembly	74	153538	1	Brake Band & Lining Assy.
19	461381	1	Free Wheeling Extension	46	343347	1	Screw, 3/8-16 x 1-1/4 Hex Hd. Cap - Hitch Mtg.	75	461468	1	Pin, 3/8 x 1-1/2 Clevis
20	446134	1	Shaft Assembly	47	342582	1	Lockwasher, 3/8 - Med. - Hitch Mtg.	76	453011	1	Washer, 3/8 SAE - Brake Band Mtg.
21	343398	1	Pin, 3/16 x 13/16 Roll - Extension to Free Wheeling Shaft	48	400192	2	Hitch Mtg.	77	460014	1	Pin, 3/32 x 3/4 Cotter - Brake Band Mtg.
22	239023	1	Lockwasher, 5/16 Med. - Ball Joint Mtg.	49	446134	2	Nut, 3/8-16 Hex - Hitch Mtg.	78	126330	1	Steering Quadrant and Arm Assy.
23	463017	1	Ball Joint - Control Arm	50	443806	2	Speed Control Pivot Brkt. Assy. Bushing - Speed Control	79	326053	1	Washer - Quadrant Retainer
24	412013	1	Drum - Brake	51	153968	1	Screw, 5/16-18 x 1-1/2 Hex Hd. Cap - Quadrant Mtg.	80	458438	1	Ring - National #X50-226
25	463038	2	Key - 3/16 x 3/4 Woodruff #9	52	311870	1	Lockwasher - 5/16 Med. - Quadrant Mtg.	81	154562	1	Retaining - Quad. Retaining Steering Support Bracket and Pushing Assy.
26	239035	2	Drum Mtg.	53	452012	1	Nut, 5/16-18 Hex Jam - Quadrant Mtg.	82	315315	1	Bushing - Steering Rod
27	412059	4	Cup Pt. Set - Drum Mtg.	54	343592	1	Speed Control Lever Assy. Spring - Compression	83	400226	2	Screw, 5/16-24 x 1 Hex Hd. Cap
			Wheel Hubs to Axle Mtg.	55	309412	1	Washer - 1/2 Std. - Spring Retainer	84	446134	2	Lockwasher, 5/16 Med.
			Hub - R.H. & L.H. Rear Wheel				Arm Control				
			Screw, 3/8-16 x 1 Sq. Hd. Kn. Cup Pt. Set - Wheel Hub to Rear Axle Mtg.				Spacer				

PARTS LIST HYDROSTATIC DRIVE 100-120 - ILLUSTRATION 1. (Cont.)

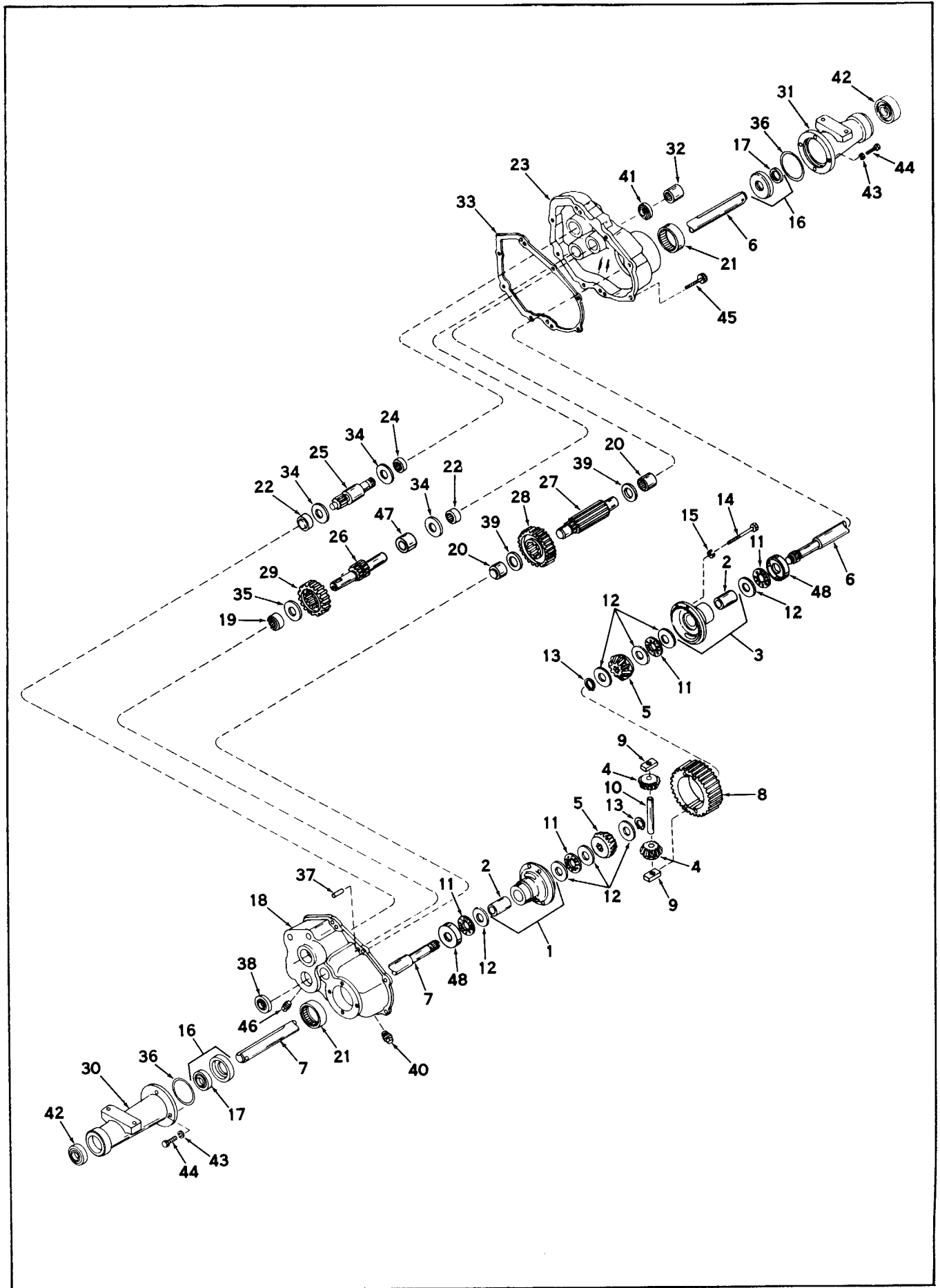
Ref. No.	Part No.	Quan.	Description	Ref. No.	Part No.	Quan.	Description
85	443108	2	Nut, 5/16-24 Hex - Steering Support Brkt. Mtg.	101	325802	2	Bracket - Fuel Tank Mtg.
86	205248	1	Grille - Lower Front	102	446128	2	Lockwasher, 1/4 Med. - Fuel Tank Straps Mtg.
87	331611	1	Bracket - Lower Front	103	443102	2	Nut, 1/4-20 Hex - Fuel Tank Straps Mtg.
90	341826	1	Grille Mtg.	104	153482	1	Fuel Tank Cap Assembly
91	400112	2	Screw, 1/4-20 x 1 Hex Hd. Cap	105	108557	1	Shut-off Valve Assembly
92	400186	2	Screw, 5/16-18 x 7/8 Hex Hd. Cap - Fuel Tank Brkt. Mtg.	106	400264	2	Screw, 3/8-16 x 1-1/4 Hex Hd. Cap - Front Cowling to Frame Mtg.
93	446134	2	Lockwasher, 5/16 Med. - Fuel Tank Brkt. Mtg.	107	303873	2	Washer - Front Cowling to Frame
94	443106	2	Nut, 5/16-18 Hex - Fuel Tank Brkt. Mtg.	108	446140	2	Lockwasher, 3/8 Med. - Front Cowling to Frame Mtg.
95	344480	2	Stud - Hood Latch	109	443110	2	Nut, 3/8-16 Hex - Front Cowling to Frame Mtg.
96	446134	2	Lockwashers, 5/16 Med.	110	315298	6	Bolt - Rear Wheel Mtg.
97	443106	2	Nut, 5/16-18 Hex	111	315298	4	Bolt - Extra, Rear Wheel Mtg.
98	308601	2	Strap - Fuel Tank Mtg.	112	443116	4	Nut - Extra, Wheel Bolt Mtg.
99	107250	1	Fuel Tank Assembly	*113		2	Tire Valve - Tubeless
100	402232	2	Screw, 1/4-20 x 1-1/4 Rd. Hd. Mach. - Fuel Tank Strap Mtg.				
				*114			Rear Wheel Disc Assy.
				*115			Tire - Rear Wheel
				*116			Inner Tube - Rear Tire
				120			Bushing - Control Link Pivot
				121	343465	1	Pin, 1/4 x 1-3/8 Roll
				122	461399	2	Spacer - Quadrant Mtg.
				123	343589	1	Cap - Speed Control
				124	341701	1	Bar - Foot Rest Mtg.
				125	343783	1	Pin, 5/32 x 1-1/4 Cotter
				126	460040	2	Switch Mtg. Bracket Assy.
				127	154062	1	Switch Actuating Arm Assy.
				128	154063	1	Screw, 5/16-18 x 1/2 Sq. Hd. Cup Pt. Set
				129	412014	1	Ring, Snap Internal Tru-Arc
				130	458124	2	Lockwasher, 5/6 Ext. Tooth
				131	447012	2	Spring - Hood Latch
				132	344482	2	Lockwasher, #8 Med.
				133	446110	2	Screw, #8 x 5/8 Slott, Rd. Hd.
				134	409250	1	Gasket - Fuel Tank Cap
				135	344156	2	Nut, 1/4-20 Hex Gripco C/Lock
				136	444708	1	Letters - Name - Set
				137	153695	8	Nut - Tinnerman - Name Letter Mtg.
					445255		

PARTS LIST - HEAD LIGHT ASSEMBLY
See Illustration 1A on Page 20

Ref. No.	Part No.	Quan.	Description
1	218033	1	Panel - Head Light
2	545491	1	Decal - Panel
3	500469	2	Reflector & Socket Assembly
4	545488	4	Gasket - Lens
5	545489	2	Lens
6	545487	4	Strap
7	403540	8	Screw, #10-24 x 5/16 Rd. Hd. Mach.
8	446116	8	Lockwasher, #10 Med.
9	545490	1	Connector
10	500470	1	Male Terminal & Wire Assy.
11	409031	2	Screw, #10 x 2-1/4 Truss Hd. Slotted, Type A
12	445247	4	Nut - Tinnerman - Headlight Assy. to Front Cowling Mtg.
13	409027	2	Screw, #10 x 1-1/2 Truss Hd. Slotted, Type A

* See Owner's Manual for tire options available at your dealer.
Ref. 111 and 112 included with all tire options.
Ref. 113, 114, 115 and 116 included with tire options as required.

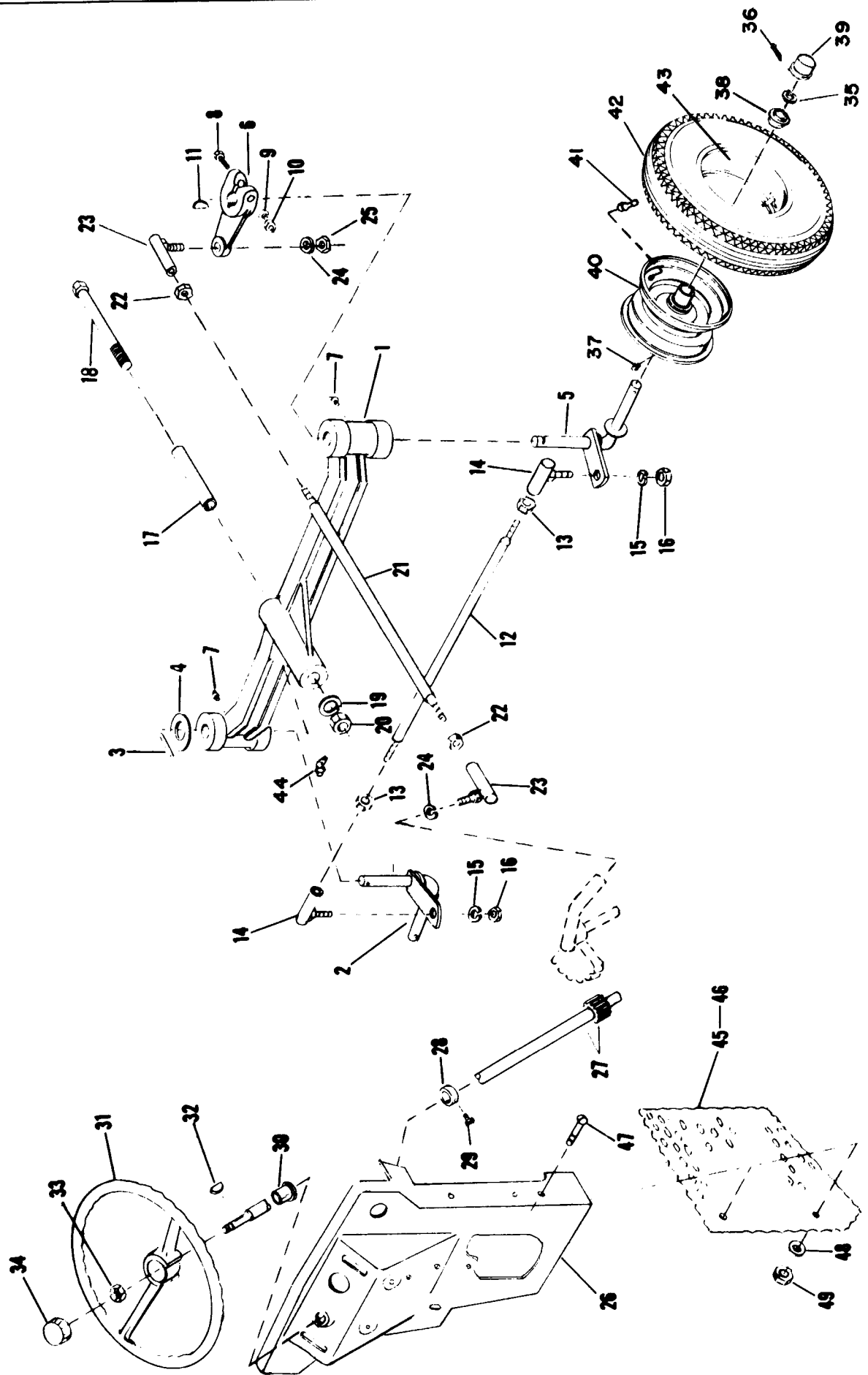
ILLUSTRATION 2.



PARTS LIST - HYDROSTATIC DRIVE 100-120 GEAR REDUCTION
AND DIFFERENTIAL - ILLUSTRATION 2.
114038 - TRANSAXLE

Ref. No.	Part No.	Quan.	Description
1	500369	1	Carrier Assembly Differential (Includes Ref. 2)
2	545355	2	Bushing
3	500370	1	Carrier Assembly Differential (Includes Ref. 2)
4	545324	2	Pinion
5	545332	2	Gear - Bevel
6	545406	1	Axle
7	545405	1	Axle
8	545321	1	Gear - Ring
9	545323	2	Block - Drive
10	545322	1	Pin - Drive
11	545354	4	Bearing - Thrust
12	545320	8	Washer - Thrust
13	590044	2	Ring - Snap
14	400124	4	Screw - Hex Head - Cap, 1/4-20 x 2-1/2
15	446128	4	Lockwasher, 1/4
16	500366	2	Retainer Assembly - Oil (Includes Ref. 17)
17	545339	2	Seal - Oil
18	500403	1	Cover Assembly (Includes Refs. 19 thru 22)
19	545345	1	Bearing - Needle
20	545343	2	Bearing - Needle
21	545349	2	Bearing, Needle
22	545340	2	Bearing - Needle
23	500404	1	Case Assembly (Includes Refs. 20, 21, 22 & 24)
24	545407	1	Bearing - Needle
25	545408	1	Shaft and Pinion
26	545409	1	Shaft and Gear
27	545410	1	Pinion - Output
28	545337	1	Gear - Output
29	545333	1	Gear - Idler
30	535009	1	Housing - Axle
31	535010	1	Housing - Axle
32	343338	1	Coupling
33	545328	1	Gasket - Case and Cover
34	545320	3	Washer - Thrust
35	545356	1	Washer - Thrust
36	590048	2	"O" Ring
37	590046	2	Pin - Dowel
38	545339	1	Seal - Oil
39	545336	2	Washer - Thrust
40	590047	1	Plug - Magnetic Drain
41	545411	1	Seal - Oil
42	545344	2	Bearing - Ball
43	446134	8	Lockwasher, 5/16
44	400186	8	Screw - Hex Head Cap, 5/16-18 x 7/8
45	590045	8	Screw - Socket Head Cap, 1/4-20 x 3/4
46	590049	1	Plug - Pipe
47	545474	1	Spacer
48	545598	2	Race - Thrust

ILLUSTRATION 3.



PARTS LIST HYDROSTATIC DRIVE 100-120 - ILLUSTRATION 3.

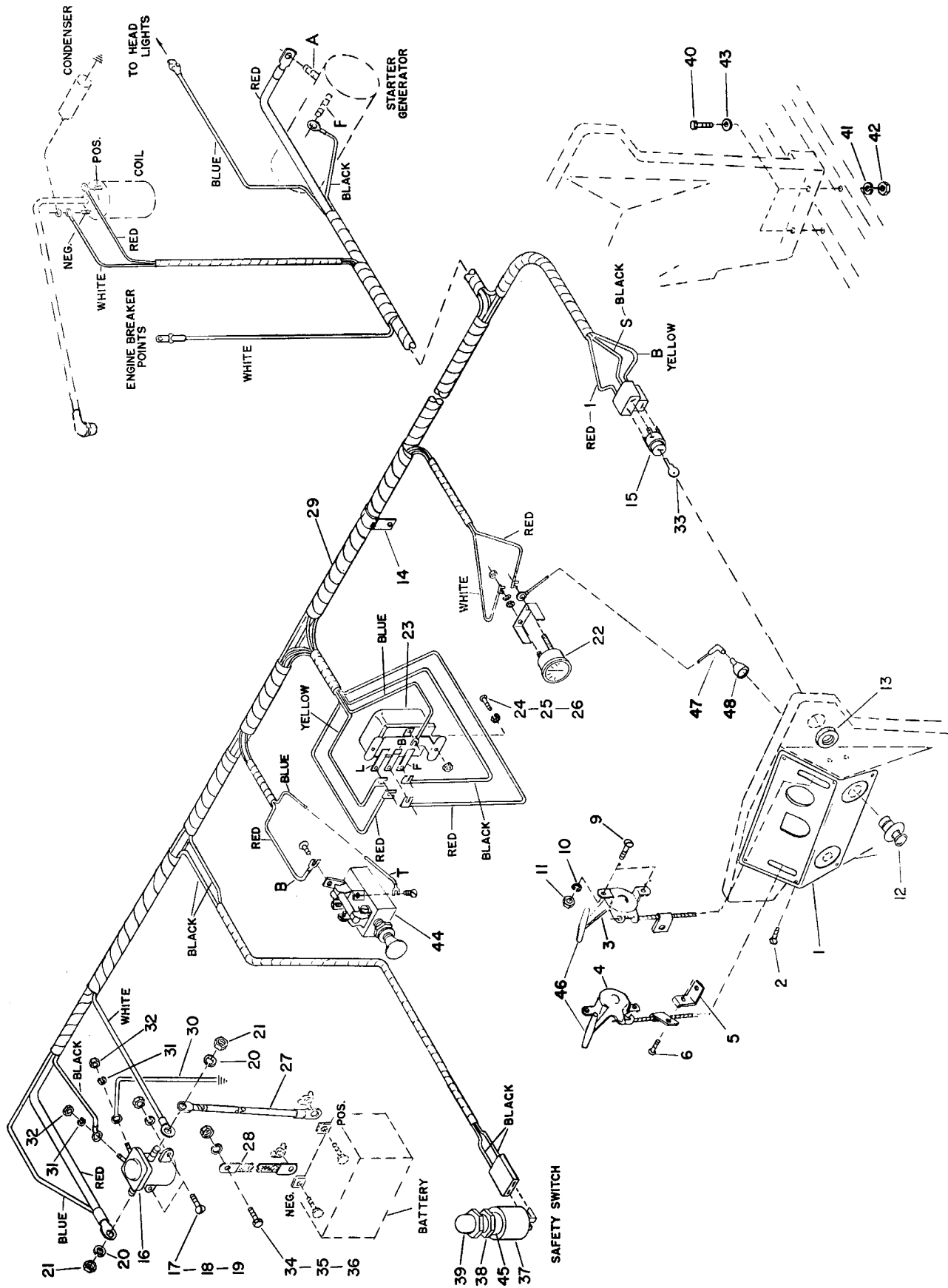
Ref. No.	Part No.	Quan.	Description	Ref. No.	Part No.	Quan.	Description
1	205231	1	Axle - Front	23	106348	2	Ball Joint
2	126331	1	L.H. Spindle Assembly	24	446152	2	Lockwasher, 1/2 Med. - Drag Link to Steering Arm Mtg.
3	461201	1	Pin, 1/4 x 1-1/2 Type 1 Groove - Front Wheel Spindle Washer Mtg.	25	443120	1	Nut, 1/2-20 Hex - Drag Link to Steering Arm Mtg.
4	452018	1	Washer, 3/4 Std. - Front Wheel Spindle Mtg.	26	205250	1	Rear Panel
5	126332	1	R.H. Spindle Assembly	27	153467	1	Steering Rod and Pinion Assembly
6	269018	1	Steering Arm	28	313273	1	Collar - Steering Rod
7	471219	2	Fitting, Grease, 1/8 P.T.F. - R.H. and L.H. Spindles	29	412013	1	Screw, 5/16-18 x 1/2 Sq. Head Cup Pt. Set - Steering Rod Collar Mtg.
8	400270	1	Screw, 3/8-16 x 2 Hex Head Cap - Spindle Steering Arm Mtg.	30	315313	1	Bushing - Steering Rod
9	446140	1	Lockwasher, 3/8 Med. - Spindle Steering Arm Mtg.	31	126178	1	Steering Wheel
10	443110	1	Nut, 3/8-16 Hex - Spindle Steering Arm Mtg.	32	463003	1	Key, 1/8 x 1/2 Woodruff #3 - Steering Wheel Mtg.
11	463017	1	Key - Woodruff #9 - Spindle Steering Arm Mtg.	33	444796	1	Nut, 5/8-11 Hex Gripco Center Loc - Steering Wheel Mtg.
12	343805	1	Tie Rod	34	545288	1	Cap - Steering Wheel
13	443820	2	Nut, 1/2-20 Hex Jam - Ball Joint Tie Rod Mtg.	35	302458	2	Washer, Front Wheel Retaining
14	106348	2	Ball Joint	36	460040	2	Cotter Pin, 5/32 x 1-1/4 - Front Wheel Mounting
15	446152	2	Lockwasher, 1/2 Med. - Tie Rod to R.H. and L.H. Tie Rod Bracket Mtg.	37	471214	2	Grease Fitting, 1/4-28, Front Wheel Disc
16	443120	2	Nut, 1/2-20 Hex - Tie Rod to R.H. and L.H. Tie Rod Bracket Mtg.	38	328106	4	Wheel Bearing - Front Axle
17	315336	1	Tube - Front Axle Support	39	343829	2	Cap - Front Wheel Hub
18	400660	1	Screw, 5/8-18 x 5 Hex Head Cap - Front Axle to Frame Mtg.	*40		2	Front Wheel Disc Assy.
19	446162	1	Lockwasher, 5/8 Lt. - Front Axle to Frame Mtg.	*41		2	Tire Valve - Tubeless
20	443828	1	Nut, 5/8-18 Hex - Front Axle to Frame Mtg.	*42		2	Tire - Front Wheel
21	343773	1	Drag Link	*43		2	Inner Tube - Front Tire
22	443820	2	Nut, 1/2-20 Hex Jam	44	471210	1	Fitting, Grease, 1/8 P.T.F. 45° Elbow - Axle Pivot Center
				45	342924	1	Screen - Side - R.H.
				46	342923	1	Screen - Side - L.H.
				47	404018	4	Screw, 1/4-20 x 3/4 Truss Hd. Mach.
				48	453023	4	Washer, 1/4 STD.
				49	443102	4	Nut, 1/4-20 Hex

* See Owner's Manual for tire options available at your dealer.

Ref. 37, 38 and 39 included with all tire options.

Ref. 40, 41, 42 and 43 included with tire options as required.

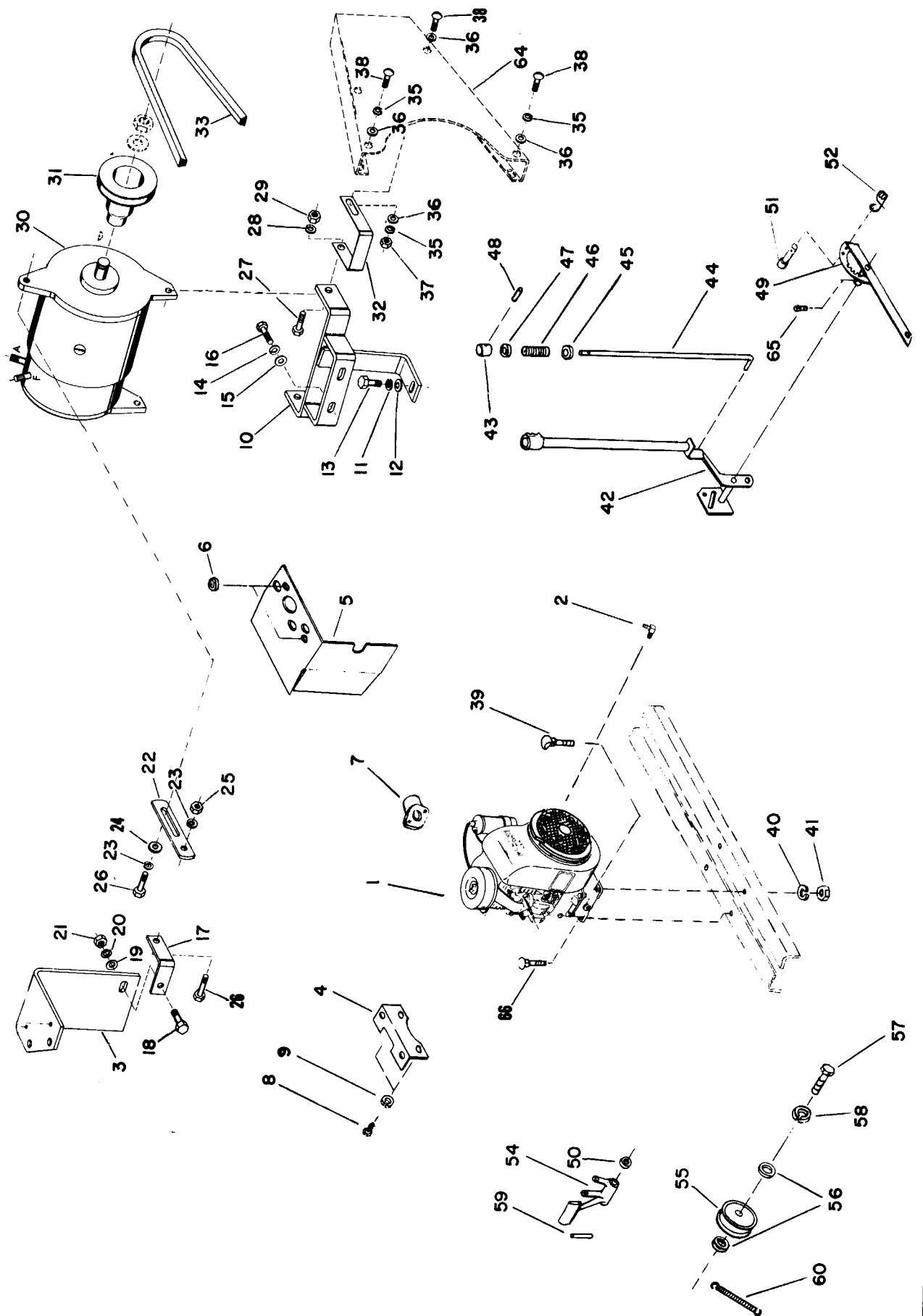
ILLUSTRATION 4.



PARTS LIST HYDROSTATIC DRIVE 100-120 - ILLUSTRATION 4.

Ref. No.	Part No.	Quan.	Description	Ref. No.	Part No.	Quan.	Description
1	328977	1	Plate - Dash Panel	24	404018	2	Screw, 1/4-20 x 3/4 Truss Head Machine - Voltage Regulator Mtg.
2	409518	6	Screw, #7 x 5/16 Rd. Head Drive - Dash Panel Mtg.	25	446128	2	Lockwasher, 1/4 Med. - Voltage Regulator Mtg.
3	154600	1	Throttle Control Assembly	26	443102	2	Nut, 1/4-20 Hex - Voltage Regulator Mtg.
4	154602	1	Choke Control Assembly	27	343797	1	Cable - Battery to Solenoid
5	344772	1	Support - Choke Cable	28	342684	1	Cable - Battery to Ground
6	403936	1	Screw - Choke Cable to Support	29	119165	1	Wiring Harness Assembly
9	403914	4	Screw, #10-24 x 3/4 Truss Head Machine - Choke and Throttle Control to Panel Mtg.	30	112206	1	Cable - Solenoid to Ground
10	446116	4	Lockwasher, #10 Med. - Choke and Throttle Control to Panel Mtg.	31	446116	2	Lockwasher, #10 Med. - S. S. Switch and Ground Cable to Solenoid Mtg.
11	444310	4	Nut, #10-24 Hex - Choke and Throttle Control to Panel Mtg.	32	444312	2	Nut, #10-32 Hex
12	113728	1	Lighter Plug Assy.	33	343060	1	Key - Ignition (Set of 2)
13	343786	1	Nut, - Ignition Switch Mtg.	34	400188	1	Screw, 5/16-18 x 1 Hex Head Cap - Ground Cable to Panel Mtg.
14	344348	1	Clip - Wire Harness Retainer	35	446134	1	Lockwasher, 5/16 Med. - Ground Cable to Panel Mtg.
15	126337	1	Ignition Switch Assembly (Incl. Ref. 13 and 33)	36	443106	1	Nut, 5/16-18 Hex - Ground Cable to Panel Mtg.
16	126070	1	Solenoid - Starter	37	126339	1	Safety Starter Switch (Incl. Ref. 38 and 39)
17	404016	2	Screw, 1/4-20 x 5/8 Truss Head Machine - Solenoid Mtg.	38	343784	2	Nut - Safety Switch Mtg.
18	446128	2	Lockwasher, 1/4 Med. - Solenoid Mtg.	39	343785	1	Boot - Rubber Protection - S. Switch
19	443102	2	Nut, 1/4-20 - Hex - Solenoid Mtg.	40	400264	2	Screw, 3/8-16 x 1-1/4 Hex Head Cap - Rear Panel to Frame Mtg.
20	446134	2	Lockwasher, 5/16 Med. - Starter Cable to Solenoid Mtg.	41	446140	2	Lockwasher, 3/8 Med. - Rear Panel to Frame Mtg.
21	443808	2	Nut, 5/16-18 Hex Jam - Starter Cable to Solenoid Mtg.	42	443110	2	Nut, 3/8-16 Hex - Rear Panel to Frame Mtg.
22	107917	1	Ammeter	43	303873	2	Washer - Rear Panel to Frame Mtg.
23	107927	1	Regulator - Voltage	44	323830	1	Switch - Headlight
				45	315346	1	Spacer - Safety Switch Mtg.
				46	342644	1	Knob (Each) - Throttle Lever, Choke Lever
				47	343025	1	Wire Assy. - Lighter
				48	113727	1	Lighter Socket Assy.

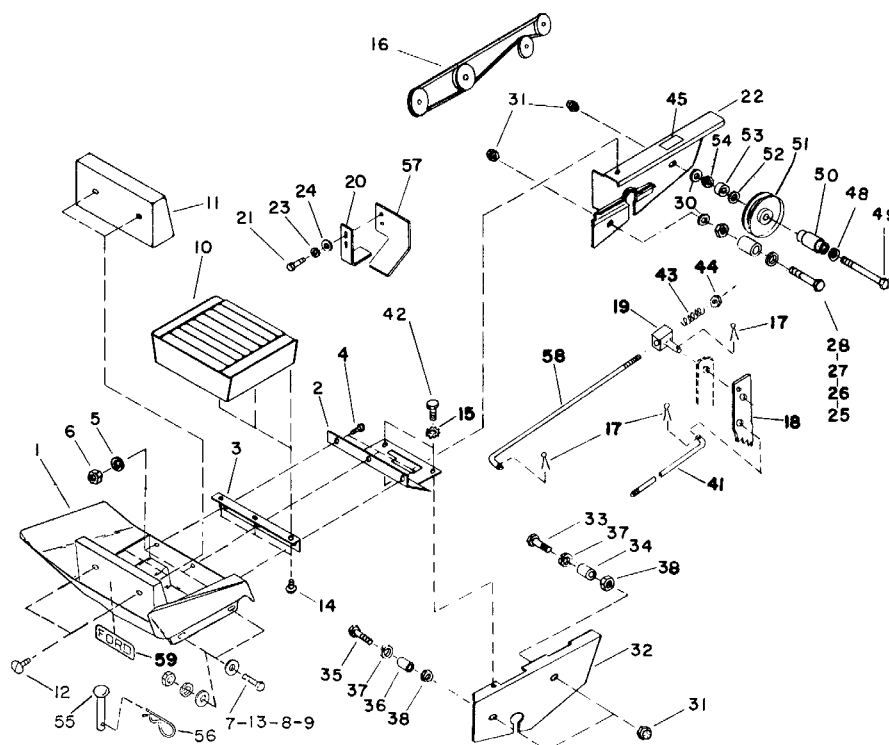
ILLUSTRATION 5.



PARTS LIST HYDROSTATIC DRIVE 100-120 - ILLUSTRATION 5.

Ref. No.	Part No.	Quan.	Description	Ref. No.	Part No.	Quan.	Description
1	153810	1	Engine Kohler - K-301, Spec 47238B - Model 120	36	453023	4	Washer - 1/4 SAE
2	153030	1	Engine Kohler - K-241, Spec 46519D - Model 100	37	443802	1	Nut - 1/4-20 Hex Jam
3	314044	1	Fitting - Fuel Line On Carburetor	38	402222	3	Screw - 1/4-20 x 1/2 Rd. Hd. Mach.
4	342919	1	Bracket - Start./Gen. Adj. Strap	39	315382	2	Bolt - Engine to Frame Mtg. - R.H.
5	154478	1	Upper Bracket Assembly - Front Shield Mtg.	40	446140	4	Lockwasher - 3/8 Med. - Engine to Frame Mtg.
6	331585	1	Deflector - Heat	41	443110	4	Nut - 3/8-16 Hex - Engine to Frame Mtg.
7	452008	2	Washer, 3/8 - SAE - Deflector Mtg.	42	126334	1	Tool Lift Lever Assembly
8	204268	1	Manifold - Exhaust	43	315349	1	Plunger - Lift Lever
9	400328	2	Screw, 7/16-14 x 5/8 Hex Hd. Cap - Upper Shield Bracket Mtg.	44	343779	1	Rod - Lift Lever Plunger
10	446146	2	Lockwasher, 7/16 Med. - Upper Shield Bracket Mtg.	45	310690	1	Collar
11	113033	1	Bracket Assembly - Start./Gen.	46	315344	1	Spring - Lift Lever Plunger
12	446140	1	Lockwasher - 3/8 Med.	47	343332	1	Washer - Lift Lever Handle Spacer
13	303873	1	Washer - 3/8 SAE	48	461355	1	Pin - 1/8 x 1/2 Roll - Lift Lever Handle Spacer Mtg.
14	400266	1	Screw - 3/8-16 x 1-1/2 Hex Hd. Cap	49	126333	1	Lift Sector Assembly
15	446140	2	Lockwasher - 3/8 Med.	50	326699	1	Spacer - Lift Lever Mtg.
16	303873	2	Washer - 3/8 SAE	51	344008	1	Pin, Clevis - Lift Lever Stop
17	400262	2	Screw, 3/8-16 x 1 Hex Hd. Cap	52	341655	1	Spring - Clevis Pin Retainer
18	326222	1	Support - Start./Gen. Adjusting Strap	54	239031	1	Pedal - Brake and Clutch
19	400262	1	Screw, 3/8-16 x 1 Hex Hd. Cap	55	108151	1	Clutch and Idler Pulley
20	453011	1	Washer, 3/8 SAE	56	342863	2	Spacer - Idler Pulley
21	446140	1	Lockwasher, 3/8 Med.	57	400640	1	Screw - 5/8-18 x 1-1/4 Hex Hd. Cap - Clutch and Idler Pulley Mtg.
22	443110	1	Nut - 3/8-16 Hex	58	446164	1	Lockwasher - 5/8 Med. - Clutch and Idler Pulley Mtg.
23	326228	1	Link - Start./Gen. Adjusting	59	461377	1	Pin - 5/32 x 1-1/8 Roll - Clutch and Brake Pedal Mtg.
24	446134	2	Lockwasher - 5/16 Med.	60	344716	1	Spring - Belt Tension
25	326213	1	Washer - Upper Start./Gen. and Link Mtg.	64		1	Kohler Engine Belt Shield - Order from Kohler Company
26	443106	1	Nut - 5/16-18 Hex	65	412013	1	Screw - 5/16-18 x 1/2 Sq. Hd. Cup Pt. Set - Sector to Frame Mtg.
27	400188	2	Screw - 5/16-18 x 1 Hex Hd. Cap	66	441520	2	Bolt, 3/8-16 x 1-1/2 Sh. Nk. Carriage - Engine Mtg. - L.H.
28	400190	2	Screw - 5/16-18 x 1-1/4 Hex Hd. Cap				
29	446134	2	Lockwasher - 5/16 Med.				
30	443106	2	Nut - 5/16-18 Hex				
31	113034	1	Start./Gen. Assembly				
32	204267	1	Pulley - Start./Gen.				
33	326226	1	Brace - Belt Shield				
34	343031	1	Belt - Start./Gen. Drive				
35	446128	3	Lockwasher - 1/4 Med.				

ILLUSTRATION 6.

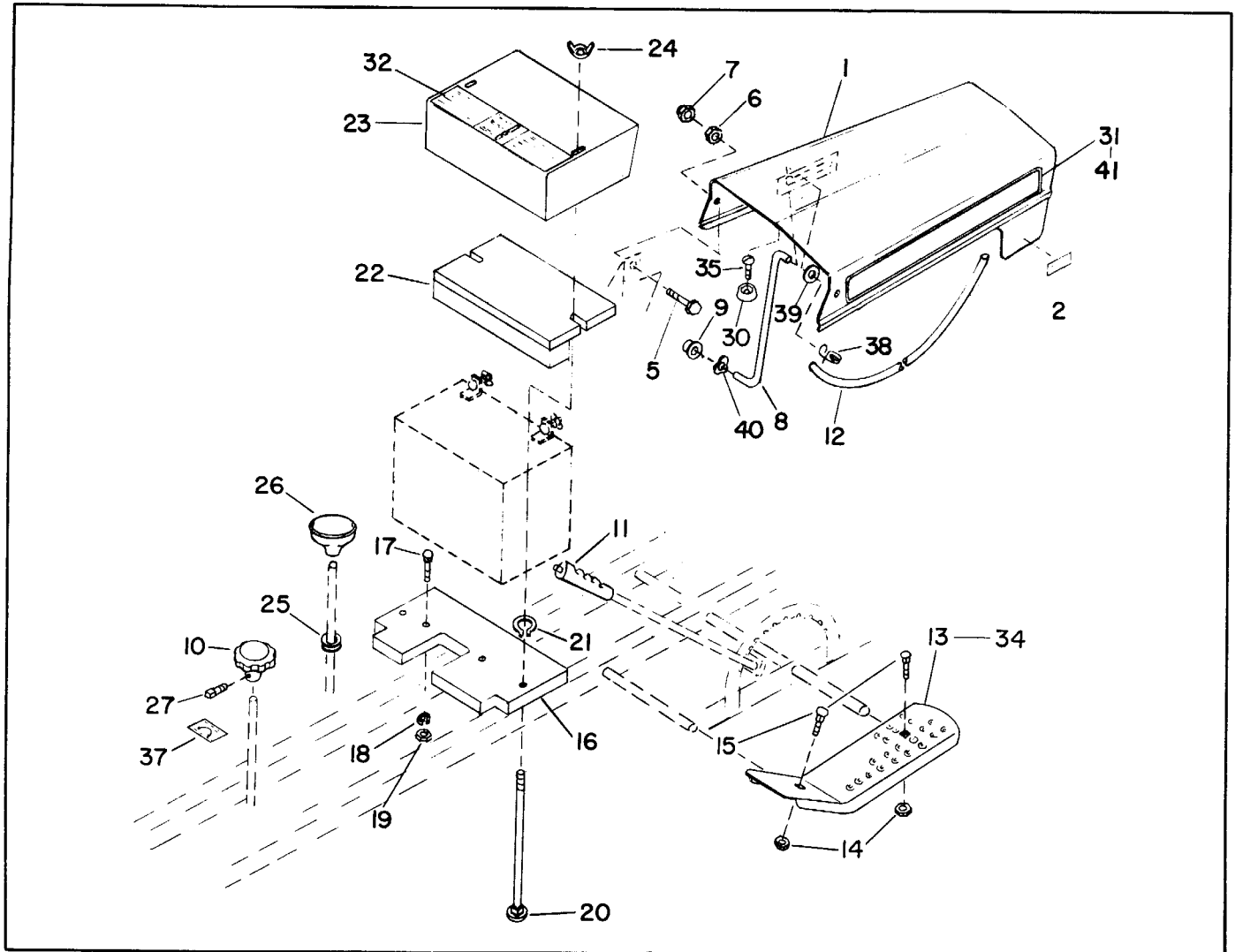


PARTS LIST HYDROSTATIC DRIVE 100-120 - ILLUSTRATION 6.

Ref. No.	Part No.	Quan.	Description
1	119143	1	Fender and Seat Assembly
2	331681	1	Apron - Seat Front
3	342562	1	Hinge - Seat
4	404014	3	Screw - 1/4-20 x 1/2 Truss Head Machine
5	446128	3	Lockwasher - 1/4 Med. - Seat Hinge and Apron Fender Mtg.
6	443102	3	Nut - 1/4-20 Hex - Seat Hinge and Apron to Fender Mtg.
7	400186	4	Screw - 5/16-18 x 7/8 Hex Hd. Cap - Seat to Frame Mtg.
8	446134	4	Lockwasher - 5/16 Med. - Seat to Frame Mtg.
9	443106	4	Nut - 5/16-18 Hex - Seat to Frame Mtg.
10	328949	1	Cushion - Seat
11	331532	1	Cushion - Back
12	404018	2	Screw - 1/4-20 x 3/4 Truss Head Machine - Back Cushion Mtg.
13	452006	8	Washer, 5/16 SAE
14	404018	3	Screw - 1/4-20 x 3/4 Truss Hd. Machine - Seat to Hinge
15	447010	2	Washer, External Tooth - Tool Box Apron to R.H. and L.H. Shield Mtg.
16	343363	1	Belt - Transmission
17	460014	3	Pin, 5/32 x 3/4 Cotter
18	344710	1	Arm - Parking Brake
19	344715	1	Retainer - Brake Rod
20	343322	1	Strap - Belt Retainer
21	400106	2	Screw - 1/4-20 x 5/8 Hex Hd. Cap
22	126479	1	Belt Shield Assy. - L.H.
23	446128	2	Lockwasher, 1/4 Med.
24	453023	2	Washer, 1/4 SAE
25	400204	1	Screw - 5/16-18 x 3-1/2 Hex. Hd. Cap - Rear Belt Shield Mtg.
26	343325	1	Spacer - Rear Belt Shield Mtg. - L.H.
27	446134	3	Lockwasher - 5/16 Med. - Belt Shield Mtg.

Ref. No.	Part No.	Quan.	Description
28	443806	2	Nut - 5/16-18 Hex Jam - Spacer to Tractor Mtg.
30	453009	2	Washer - 5/16 SAE - Belt Shield Mtg.
31	445010	4	Nut - 5/16-18 Hex Acorn - Belt Shield Mtg.
32	126338	1	R.H. Shield Assembly
33	401055	1	Screw - 5/16-18 x 1-5/8 Hex Hd. Cap - Front R.H. Shield Mtg.
34	316444	1	Spacer - Front R.H. Shield Mtg.
35	401055	1	Screw - 5/16-18 x 1-5/8 Hex Hd. Cap - Rear R.H. Shield Mtg.
36	316444	1	Spacer - Rear R.H. Shield Mtg.
37	446134	2	Lockwasher - 5/16 Med. - R.H. Shield Mtg.
38	443806	2	Nut - 5/16-18 Hex Jam - Spacers to Tractor Mtg.
41	344711	1	Rod - Parking Brake Control
42	400104	2	Screw - 1/4-20 x 1/2 Hex Hd. Cap - Apron to R.H. and L.H. Shield Mtg.
43	309506	1	Spring - Brake Actuator
44	444718	1	Nut, 5/16 - 18 Hex Gripco C/Lk.
45	344713	1	Decal - Brake Lock
48	446134	1	Lockwasher, 5/16 Med.
49	400204	1	Screw - 5/16-18 x 3-1/2 Hex Hd. Cap
50	343316	1	Sleeve, Idler Pulley Mtg.
51	154578	1	Pulley, Fixed Idler
52	457016	1	Washer - 5/16 Riveting
53	325522	1	Spacer - Belt Shield Mtg. L.H.
54	443806	1	Nut - 5/16-18 Hex Jam
55	461469	1	Pin - 1/2 x 1-15/16 Clevis - Hitch Pin
56	460312	1	Pin - #2 Hair, Rein Leitzke #LHCOT -Hitch Pin
57	344043	1	Shield, Cooling Fan
58	344717	1	Rod - Brake Actuator
59	343021	1	Decal - Name

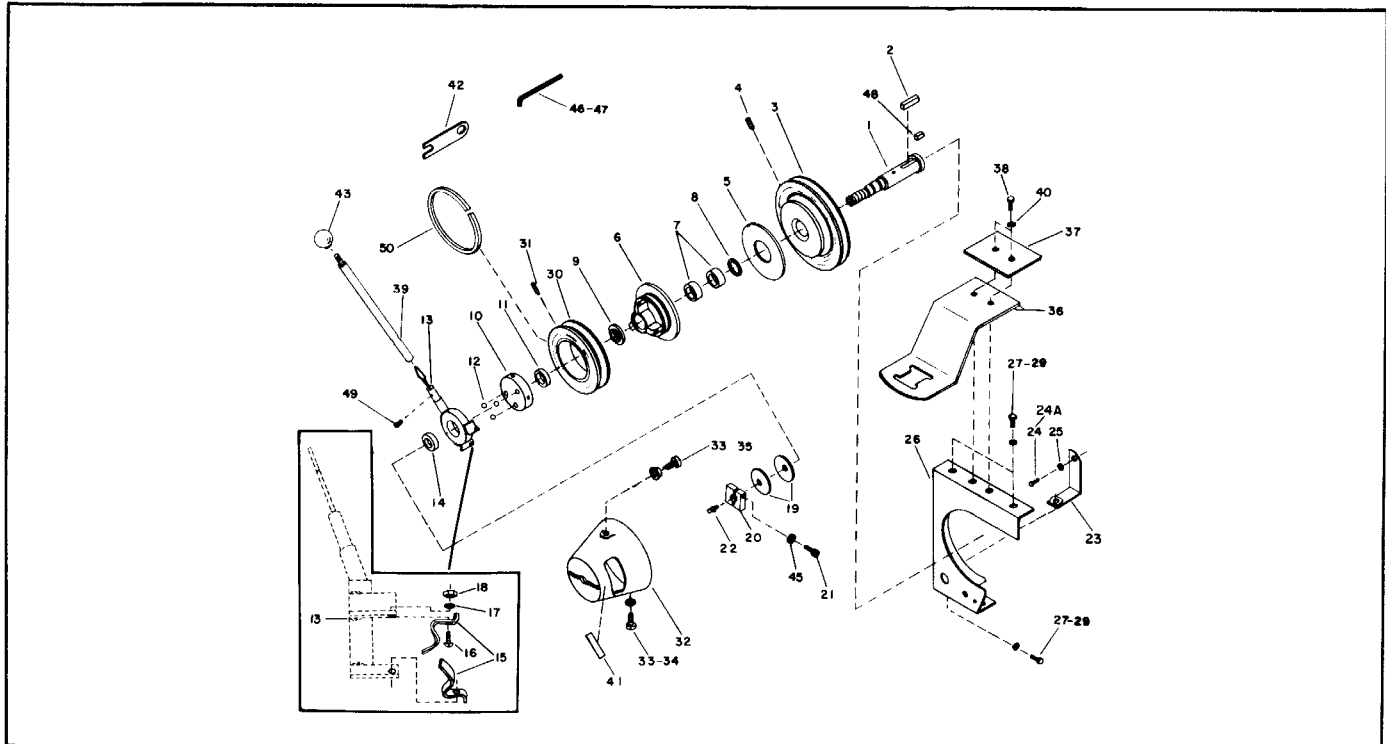
ILLUSTRATION 7.



PARTS LIST HYDROSTATIC DRIVE 100-120 - ILLUSTRATION 7.

Ref. No.	Part No.	Quan.	Description	Ref. No.	Part No.	Quan.	Description
1	126431	1	Hood Assembly	20	342590	2	Bolt - Battery Hold Down
2	344483	2	Decal - L.H. and R.H. Hood Latch Instructions	21	458054	2	Ring, Tru-Arc Retaining - Battery Hold Down Bolt Retaining
5	400188	2	Screw, 5/16-18x1 Hex Hd. Cap	22	331549	1	Block - Battery Hold Down
6	443806	2	Nut, 5/16-18 Hex Jam	23	331543	1	Cover - Battery
7	445010	2	Nut, 5/16-18 Hex Acorn-Hood to Rear Panel Mtg.	24	445612	2	Nut, 1/4-20 Std. Wing - Battery Cover Mtg.
8	342613	1	Rod - Hood Support	25	341718	1	Grommet - Parking Brake
9	445252	1	Nut, 1/4 Push on Cap, Type B, Tinnerman - Hood Support Rod to Panel and Hood Mtg.	26	304257	1	Handle - Parking Brake
10	342656	1	Knob - Free Wheeling	27	412061	1	Screw, #10-32x1/2 Sq. Hd. Cup Pt. Set
11	341833	1	Grip - Lift Lever	30	343807	1	Bumper - Rubber Rear Panel Hood
12	342428	1	Fuel Line	31	343279	2	Decal - Tractor Name and Model - 120
13	331754	1	Foot Rest - R.H.	32	331803	1	Decal - Shifting
14	444708	4	Nut, 1/4-20 Hex Gripco C/Lock	34	331755	1	Foot Rest - L.H.
15	441668	4	Screw - 1/4-20x1-1/4 Sq. Nk. Carr.	35	409250	1	Screw, #8x5/8 Rd. Hd. Type B - Bumper Fastening
16	342593	1	Block - Battery Carrier	37	343580	1	Decal - Free Wheeling
17	440050	2	Bolt, 1/4-20x1-1/2 Sh. Sq. Nk. Carr. - Carrier Block to Frame Mtg.	38	341655	1	Spring
18	446128	2	Lockwasher, 1/4 Med. - Carrier Block to Frame Mtg.	39	453023	1	Washer, 9/32
19	443102	2	Nut, 1/4-20 Hex - Carrier Block to Frame Mtg.	40	454026	1	Wave Washer, 9/32
				41	343032	2	Decal - Tractor Name and Model - 100

ILLUSTRATION 8.



PARTS LIST HYDROSTATIC DRIVE - POWER DRIVE CLUTCH FOR 100-120 - ILLUSTRATION 8.

Ref. No.	Part No.	Quan.	Description
1	331547	1	Extension Shaft
2	342607	2	Key - Extension & Engine Pulley Mtg.
3	239022	1	Pulley - Engine
4	415527	2	Screw, 5/16-18x3/4 Soc. Hd. Kn. Cup Pt. Set - Extension & Engine Pulley Mtg.
5	331546	1	Disc - Friction Clutch
6	153494	1	P.T.O. Pulley Assembly
7	342612	2	Bearing - Needle
8	342596	1	Seal - Oil
9	342597	1	Washer
10	153493	1	Cam Backing Plate Assembly
11	310646	1	Bearing - Ball
12	465009	3	Ball, 3/8 Dia. Steel (Cam Clutch)
13	154067	1	Cam Plate Assembly
14	310646	1	Bearing - Ball
15	342742	2	Spring - Cam Engaging
16	402056	2	Screw, #8-32x3/8 Rd. Hd. Mach. - Cam Spring to Cam Stop Mtg.
17	446110	2	Lockwasher, #8 Med. - Cam Spring to Cam Stop Mtg.
18	444306	2	Nut, #8-32 Hex - Cam Spring to Cam Stop Mtg.
19	342610	2	Washer - Spring
20	342991	1	Nut - Clutch Lock
21	434023	1	Screw, 1/4-20x1-1/4 Soc. Hd. Cap - Clutch Lock Nut
22	471229	1	Fitting - Grease 1/4-28 NF - Extension Shaft

Ref. No.	Part No.	Quan.	Description
23	153495	1	Lower Bracket Assembly - Front Shield
24	400328	1	Screw, 7/16-14x5/8 Hex Hd. Cap - Lower Bracket to Engine Mtg.
25	446146	1	Lockwasher, 7/16 Med.
26	126442	1	Front Shield Assembly
27	400182	3	Screw, 5/16-18x5/8 Hex Hd. Cap - Front Shield Mtg.
29	446134	3	Lockwasher, 5/16 Med. Shield Mtg.
30	239046	1	Pulley - Rotary - P.T.O.
31	415559	3	Screw, 5/16-18x1 Soc. Hd. Cup Pt. Set - Pulley Mtg.
32	218016	1	Cover - Clutch
33	342599	3	Screw - Cover Mtg.
34	342594	2	Washer - Cover Mtg.
35	342849	1	Cap - Anti-Rattle
36	331910	1	Spring - Clutch Retaining
37	344541	1	Plate - Spring Mtg.
38	400104	2	Screw, 1/4-20x1/2 Hex Hd. Cap
39	154059	1	Clutch Lever Assembly
40	446128	2	Lockwasher, 1/4 Med.
41	342662	1	Decal - Clutch
42	342850	1	Gauge - Clutch Adj.
43	342582	1	Knob - Lever
45	446128	1	Lockwasher, 1/4 Med. Clutch Lock Nut
46	471001	1	Wrench, 5/16 - Soc. Hd.
47	471002	1	Wrench, 1/4 - Soc. Hd.
48	343304	1	Seal - Grease
49	414009	1	Screw, #10-24x1/4 Set
50	458442	1	Ring, Snap - External